

---

# INVENTORY OF EXISTING AND PROPOSED TRAILS

---

## AN OVERVIEW OF EXISTING AND PROPOSED TRAILS IN DICKENSON COUNTY

**ATV Trails** (302) - Proposed  
County: Dickenson

- Potential for developing motorized trails similar to West Virginia's Hatfield and McCoy Trail System
- Potential for trailhead in Haysi to connect with network of trails in Buchanan County VA. and Pike County KY. Mayor Yates of Haysi expressed strong interest in his community establishing itself as "ATV-friendly".
- Potential in the southern portion of the county, possibly connecting the existing Mountainview ATV Trail
- System with the communities of Haysi and Dante.
- From Dante, there could also be connecting ATV trails into Coeburn and St. Paul.

**Bike Routes:** **TransAmerica Bicentennial Bike Route** (302) Exists  
Counties: Dickenson/Buchanan/Russell

[http://en.wikipedia.org/wiki/U.S.\\_Bicycle\\_Route\\_76](http://en.wikipedia.org/wiki/U.S._Bicycle_Route_76)

Follows Hwy 80 at Elkhorn City near the Breaks into Virginia and continues eastward. Stewards are the Adventure Cycling Club. <http://www.adventurecycling.org/>

**Recommendation:** A review of the route should be done due to traffic changes over time. Once route is confirmed, website should be updated and route promoted and marketed.

**Bicycle/Hiking Trail:** **Cranesnest River Trail** In the works  
County: Dickenson

<http://www.dgif.virginia.gov/vbwt/loop.asp?trail=2&loop=MLP>

Cranesnest River Trail is being developed along the banks of the Cranes Nest River in the John W. Flannigan Reservoir property. Work is in progress. Detailed plans available.

**Canoe Trail:** **Pound River** Rt 624 put-in. Exists  
Counties: Dickenson/Wise

Class I-II - 8.5 miles long (Route 624 to Pound Fishing Access)

<http://www.riverfacts.com/rivers/13532.html>. Website includes map, GPS coordinates, description.

**Canoe Trail:** **Pound River** Rt 739 put-in. Exists  
County: Dickenson

Class I-II(III) - 2 miles long (Route 739 to Route 611)

<http://www.riverfacts.com/rivers/13531.html>. Website includes map, GPS coordinates, description.

**Canoe Trail:** **Prater Creek** Exists  
County: Dickenson

Class II-III - 7.5 miles long (Prater to Haysi) <http://www.riverfacts.com/rivers/13537.html>

Website includes map, GPS coordinates, description

**Canoe Trail:** **Russell Fork** Exists  
County: Dickenson

<http://www.riverfacts.com/rivers/13559.html>

Class II-III+ - 3 miles long (VA 611 to Garden Hole Road)

# INVENTORY OF EXISTING AND PROPOSED TRAILS

---

**Canoeing and Kayaking: Russell Fork River** Exists

Counties: Dickenson/Buchanan

<http://www.virginia.org/site/description.asp?AttrID=15160>

A tributary of the Big Sandy River, the Russell Fork River is a scenic series of rapids, pools and tortuous twists. World class whitewater rafting opportunities are available on the river running through the Breaks Canyon (Breaks Interstate Park) below the John Flannagan Dam four weekends in October when released from the dam create raftable water. Whitewater rating; Class III-V+, depending on the stretch of river. Ability exists to run easier rapids or harder rapids without running the other. Kayakers or rafters will enjoy this intense river. Russell Fork Whitewater outfitters offers day trips and assistance for families and groups. (276) 530-7044.

**Canoeing and Kayaking: John W. Flannagan Dam & Reservoir** Exists

County: Dickenson

<http://www.dickensoncounty.net/johnflannagan.html>

During the first four full weekends in October Flannagan has whitewater releases to achieve winter pool. From the dam, the first two miles are class II rapids which progresses downstream reaching Class V + rapids. Some of the most challenging rapids in the eastern U.S. can be found while traveling through Breaks Interstate Park with names like 20 Stitches, Broken Nose and Triple Drop.

**Greenway: Russell Fork Greenway** (88) Proposed

Counties: Dickenson/Buchanan

Russell Fork Greenway could connect the town of Haysi in Dickenson County to Buchanan County and on to Kentucky through Breaks Interstate Park. It is a non-motorized trail proposed to connect the Breaks Interstate Park with Flannigan Dam along the banks of the Russell Fork River.

**Hiking Trails: Chestnut Ridge Nature Trail** (at Breaks Interstate Park)

Counties: Dickenson/Buchanan

Chestnut Ridge Nature Trail is made up of the combination of the Ridge Trail, Laurel Branch Trail and the Geological Trail. Rated as easy/moderate.

**Hiking Trails: Geological Trail** (at Breaks Interstate Park) Exists

Counties: Dickenson/Buchanan

This half-hour, self-guided nature trail takes its name from the interesting rock formations and faults along its way. The path varies from smooth to rocky, and it changes grade frequently. On hot days hikers enjoy the cool air along the rock face. This trail can be combined with the Ridge Trail for a loop back to the Stateline Overlook. Trail: .35 mile, self-guided. Degree of difficulty: Moderate.

**Hiking Trails: Lake Trail** (at Breaks Interstate Park) Exists

Counties: Dickenson/Buchanan

This easy walking trail, popular with wildlife watchers, takes visitors along the undeveloped side of Laurel Lake past marshes and inlets. This trail joins the Laurel Branch Trail and also connects with the pool and dock areas. Entry points are at Potter's Knoll, the visitor center, and the dam. Trail: .5 mile. Degree of difficulty: Easy.

# INVENTORY OF EXISTING AND PROPOSED TRAILS

---

**Hiking Trails:**           **Laurel Branch Trail** (at Breaks Interstate Park)           Exists

Counties:                 Dickenson/Buchanan

Named for the stream it follows its entire length, this trail extends from the lower end of Laurel Lake to Grassy Creek. From the lake to a rock formation called The Notches, the terrain is flat and easy. The last .5 mile through a mixed forest of hemlock and hardwoods, the climb becomes steep, rocky, and uneven. Rhododendron thickets reward the hiker with their showy pink blooms in June and July. Trail: 1.25 miles. Degree of difficulty: Easy at first, becoming difficult the last .5 mile.

**Hiking Trails:**           **Overlook Trail** (at Breaks Interstate Park)           Exists

Counties:                 Dickenson/Buchanan

Frequent grade changes characterize this scenic path that leads along the edge of cliffs to provide an almost continuous canyon view. The hike is spectacular in spring and fall. Protect children from edges where there are no railings. Trail: .75 mile. Degree of difficulty: Difficult.

**Hiking Trails:**           **Prospector's Trail** (at Breaks Interstate Park)           Exists

Counties:                 Dickenson/Buchanan

This hike follows the base of the cliffs about 350 feet beneath the major overlooks, following the contours of the land until it becomes rocky the last .5 mile. It offers a different perspective on the rock cliffs, overlooks above, and canyon below. Trail: 1.5 miles. Degree of difficulty: Moderate.

**Hiking Trails:**           **Ridge Trail** (at Breaks Interstate Park)           Exists

Counties:                 Dickenson/Buchanan

Bird watchers favor this self-guided nature hike across the top of a ridge covered with hardwoods and mountain laurel. After an easy, level beginning, the trail becomes steep near The Notches. Trail: .5 mile, self-guided. Degree of difficulty: Easy at first, then difficult.

**Hiking Trails:**           **River Trail** (at Breaks Interstate Park)           Exists

Counties:                 Dickenson/Buchanan

Hikers are advised to wear sturdy shoes, take water, and travel with a companion on this extremely steep and rugged trail with many switchbacks, descending to a gentler grade along the river. Outstanding views. Trail: 1 mile. Degree of difficulty: Difficult.

**Hiking Trails:**           **Towers Overlook Trail** (at Breaks Interstate Park)           Exists

Counties:                 Dickenson/Buchanan

Short .3 mile trail with breathtaking views. Degree of difficulty: portions are difficult.

**Horse Trails:**           **Breaks Interstate Park Horse Trails**           Exists

Counties:                 Dickenson/Buchanan

Used to offer trail rides but due to insurance issues, this activity is no longer offered. Trails are open to the public including a popular one at the Knob Tower. One of the horse trails begins at the riding area located on the right side of the road as one turns towards the cottage area and continues to the campground providing a 30 to 40 minute ride.

# INVENTORY OF EXISTING AND PROPOSED TRAILS

---

**Horse Trails:** **Cumberland & Pine Mountain Horse Trail** In the works. Section now open.  
Counties: Wise/Dickenson

<http://www.virginia.org/site/description.asp?AttrID=38377>

Serious hikers or horseback riders will love this scenic trail which follows the crest of the Cumberland Mountains dividing Virginia and Kentucky for 26 miles from Pound Gap in Wise County to Potter's Flats in the Breaks Interstate Park. Trailhead parking available for horse trailers. The trail requires map reading and safety skills. At least 7 access points exists off St. Rt. 630 and 611. Join us for our annual trail rides the 2nd weekend in May and the second weekend in October. When complete, the Pine Mountain Horse Trail will connect Breaks Interstate Park with the Pound Reservoir in Wise County.

Contact: Pine Mountain Trail Riders, Rt 83, Clintwood, VA 24228 Phone: (606) 633-2362

*\*Note: Detailed description of Pine Mountain Trail noted at end of this section.*

**Horse Trails:** **John W. Flannagan Dam & Reservoir** Exists  
County: Dickenson

<http://www.dickensoncounty.net/johnflannagan.html>

John W. Flannagan Pound River Area offers a horse show ring which is managed by the Cumberland Mountain Trail Riders. Shows are scheduled the second of the month, June – August. Trail Ride outings are in May and September.

**Mountain Biking Trails:** **Breaks Interstate Mountain Biking Trails** Exists (305)  
Counties: Dickenson/Buchanan

<http://www.breakspark.com/index.php?n=46&id=97&sid=97>

There is a designated trail for mountain biking in Breaks Interstate Park. It begins just before one reaches the cottages on the left hand side of the road. The trails go in behind the Naturalist's residence where there are approximately 13 miles of trails in a stack loop system design.

Map: <http://www.wise.k12.va.us/andy/images/maps/BREAKSTRAIL.PDF>

**Multi-Use Trail:** **Cumberland Mountain Trail Extension** Proposed  
County: Dickenson

Cumberland Mountain Trail Extension will connect the Pine Mountain Trail in Dickenson County to the Cumberland Mountain Trail in Tennessee.

**Multi-Use Trail:** **Haysi-Breaks Trails** Proposed

This trail would start in Haysi and travel north primarily following the Russell Fork River just past the Lover's Leap area at Breaks Interstate Park. (Detailed Map available)

**Multi-Use Trail:** **Haysi-Vicey Trail** Proposed

The Haysi-Vicey Trail comes off the Haysi-Breaks Trail noted above then heads east following along the abandoned rail R.O.W. to tie into Southern Gap Planned Community Trails Network. (Map available)

**National Scenic Trail:** **Appalachian National Scenic Trail** (302) Exists

Appalachian National Scenic Trail traverses the area through public and private land. Every effort should be made to avoid impacts to the trail in planning for public projects such as roads, pipelines and power lines.  
*NEED CLARIFICATION OF ROUTE.*

# INVENTORY OF EXISTING AND PROPOSED TRAILS

---

**Scenic River:**                    **Russell Fork** (155/305)                    Proposed

County:                    Dickenson

The entire Russell Fork River in Break Interstate Park in Dickenson County has the components to be designated a scenic river.      Class 4 & Class 5 whitewater rafting in Breaks Interstate State Park area. The shortage of public access sites limits the duration and types of trips that can be offered.

**Suggestion:** There is also a need to improve public access to stocked trout streams in the region. Inadequate parking and access trails create congestion, resource degradation and unsafe conditions during popular fishing days.

**Statewide trunkline trails:**   **Great Eastern Trail**                    (288) In the works

Counties:                    Dickenson/Lee/Wise/Buchanan

Great Eastern Trail - Major trunkline trail traverses the northern border of Virginia and connect with trails in both Alabama and New York. Anticipated to use the Cumberland Mountain Trail which comes out of Tennessee at the Cumberland Gap, cuts west to connect with the Pine Mountain Trail on its way to Breaks Interstate Park then continues northeast across the state.

**Thematic Trail:**                **Crooked Road**                    (290) Exists

Counties:                    Dickenson/Lee/Scott/Wise

<http://www.thecrookedroad.org/>

250 mile Virginia's Heritage Music Trail. Map: <http://www.virginia.org/images/CRmap2big.gif>

Bike across Virginia Event - <http://www.bikevirginia.org/2008/>

**Virginia Birding & Wildlife Trail:**   **Lonesome Pine Loop VBWT**                    Exists

Counties:                    Dickenson/Wise/Buchanan

<http://www.dgif.virginia.gov/vbwt/loop.asp?trail=2&loop=MLP>

**Virginia Byway**                (304)                    Recommended by DCR

Dickenson                    Recommended

Route 611 and Route 80 between Breaks Interstate Park and John W. Flanagan Dam & Reservoir have been recommended for consideration as a Virginia Byway      Clintwood, VA 24228. Apply for Virginia Byway status for section of road.

**White Water Rafting:**                **Russell Fork** whitewater rafting                    Exists

County:                    Dickenson

Class 4 and Class 5 Whitewater run on Russell Fork in Breaks Interstate Park. Internationally recognized as one of the premier rafting rivers.

# INVENTORY OF EXISTING AND PROPOSED TRAILS

---

## **Additional information on the Cumberland Mountain Trail (Horseback Riding) within the George Washington and Jefferson National Forests**

[www.mountaintravelguide.com/Horse%20Trails/virginia/dickenson/CumberlandMountainTrail.htm](http://www.mountaintravelguide.com/Horse%20Trails/virginia/dickenson/CumberlandMountainTrail.htm)

Length: 25.7 miles

Rating: Strenuous

Many scenic overlooks are located along the trail in the form of natural openings and large rock outcrops. These overlooks provide views of Virginia and Kentucky. Viewing is especially spectacular during Fall Foliage. Pine Mountain is relatively isolated, having only one access road suitable for vehicular travel. This solitude is much sought after by the hikers and horse riders who frequent the trail.

The Forest Service has trailhead parking for horse trailers at Forest Service Road 616 at Mullins Pond and also at Counts Cabin approximately 1 mile east of Blowing Rock on State Route 611. The Forest Service has a volunteer agreement with the Cumberland Mountain Trail Riding Club in Clintwood, Virginia to assist in the maintenance of this trail. The trail club holds several rides each year with as many as 150 riders participating in each ride.

Trail Beginning: Trail begins at Pound Gap, Virginia on Forest Service Road 201.

Trail Ending: Trail comes down from Pinnacle Rock to the Breaks Interstate Park.

Requires map reading skill and challenge to travel. Hikers and horseback riders are encouraged to carry water. Safety is also a concern because the trail is steep and rocky and there are large rock outcrops along the trail.

### **Directions:**

Access points to the trail exist off U.S. 23 at Pound Gap, and State Route 630 in Wise. Access points in Dickenson County are off Forest Service road 616 and State route 611. There are at least 7 access points to the trail off State Routes 630 and 611.

## **OTHER NOTED INFORMATION OR ATTRACTIONS**

**Archaeological Survey** (132) Fair

**Architectural Survey** (132)

Portions of Tazewell, Wise, Norton rated excellen. Portions of Lee, Russell, Tazewell rated good. Portions of Scott rated fair. Portions of Dickenson, Buchanan rated poor.

**Attractions:** **Ralph Stanley Museum** (290)

Counties: Dickenson - Clintwood

<http://www.virginia.org/site/description.asp?AttrID=31010&CharID=398292>

**Conservation Lands:** **Federal** Exists

**Full time parks & recreation director** (267) None

# INVENTORY OF EXISTING AND PROPOSED TRAILS

---

**National Forest:**      **George Washington & Jefferson National Park**      (212) Exists  
Counties:                      Lee/Scott/Wise/Dickenson  
<http://trailsrus.com/swvirginia>

**National Forest:**      **John W. Flannagan Dam & Reservoir**                      Exists  
County:                              Dickenson  
<http://www.virginia.org/site/description.asp?AttrID=15159>

Located in a rugged, wooded Cumberland Mountain setting, this V-shaped 1,145 acre reservoir stores waters of the Cranesnest and Pound Rivers: this is some of America's cleanest and clearest water (some spots, visibility of 40+ feet). The reservoir provides flood control, low-flow augmentation, fish and wildlife enhancement, water supply and recreation, including: picnicking, camping, swimming, fishing motor boating, water-skiing, marina, launch ramps, hiking, hunting, whitewater rafting and a visitor center.

*Please Note: This water source provides the only opportunities for power boating and sailing in the region (DCR, 2007).*

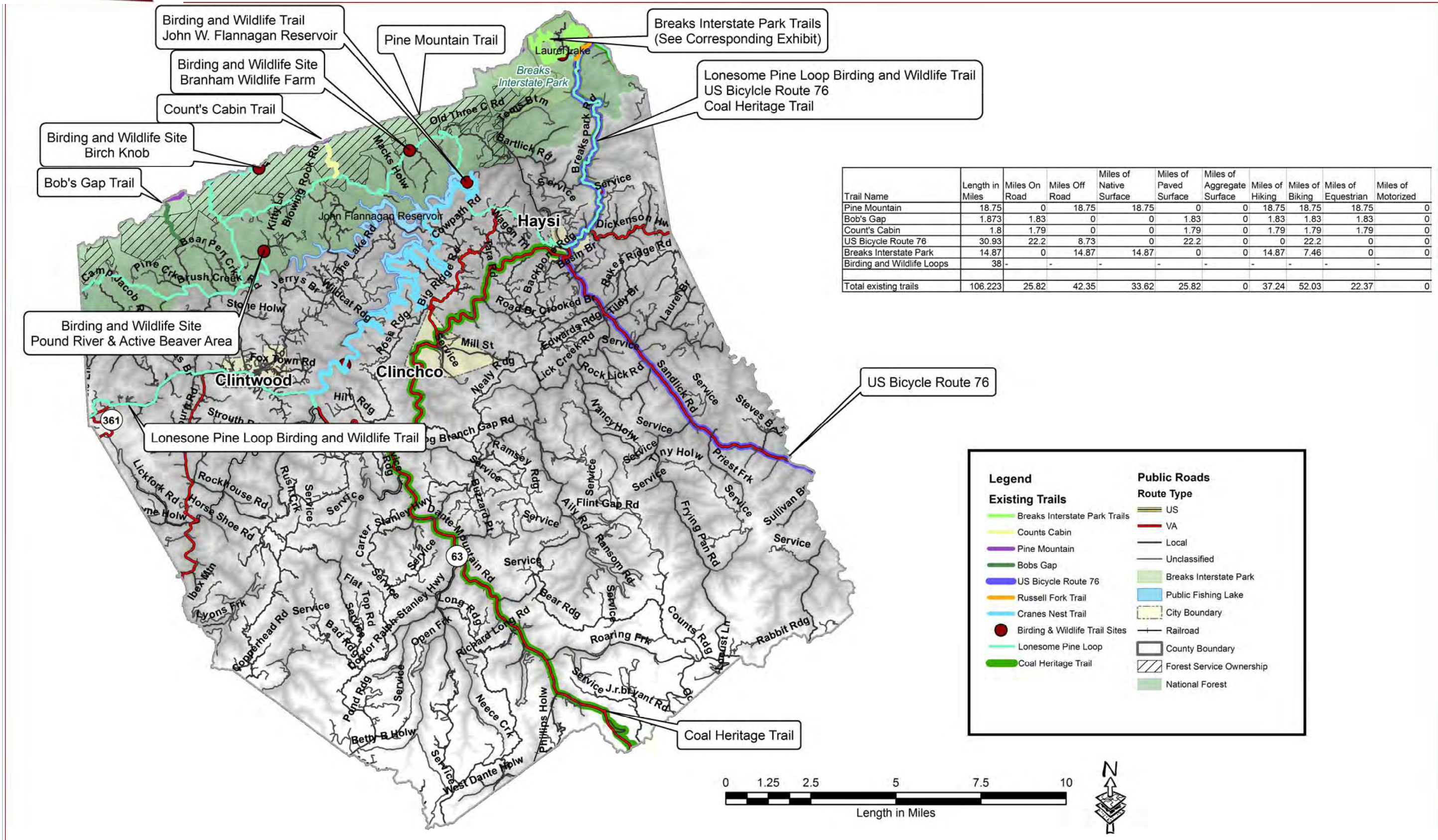
**Suggestion:** Because the demand for flatwater recreation exceeds supply, plans for other activities involving the use of water from the reservoir for white water releases should be considered for this resource (DCR, 2007).

**Recreational Planning Regions:**      **Cumberland Plateau**                      Region 2  
Region 2 includes:                              Dickenson, Buchanan, Russell, and Tazewell.

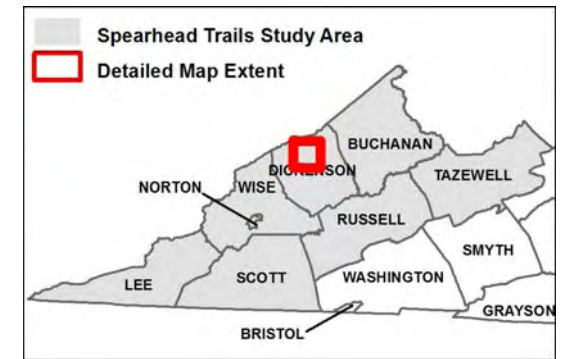
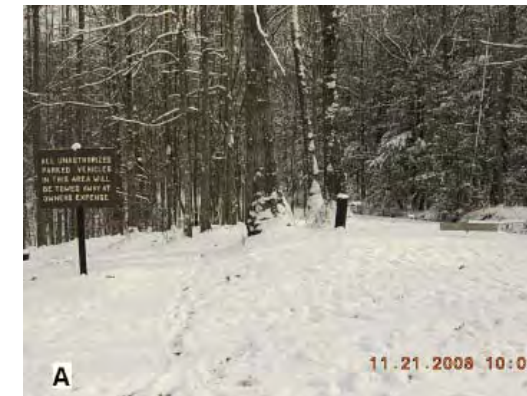
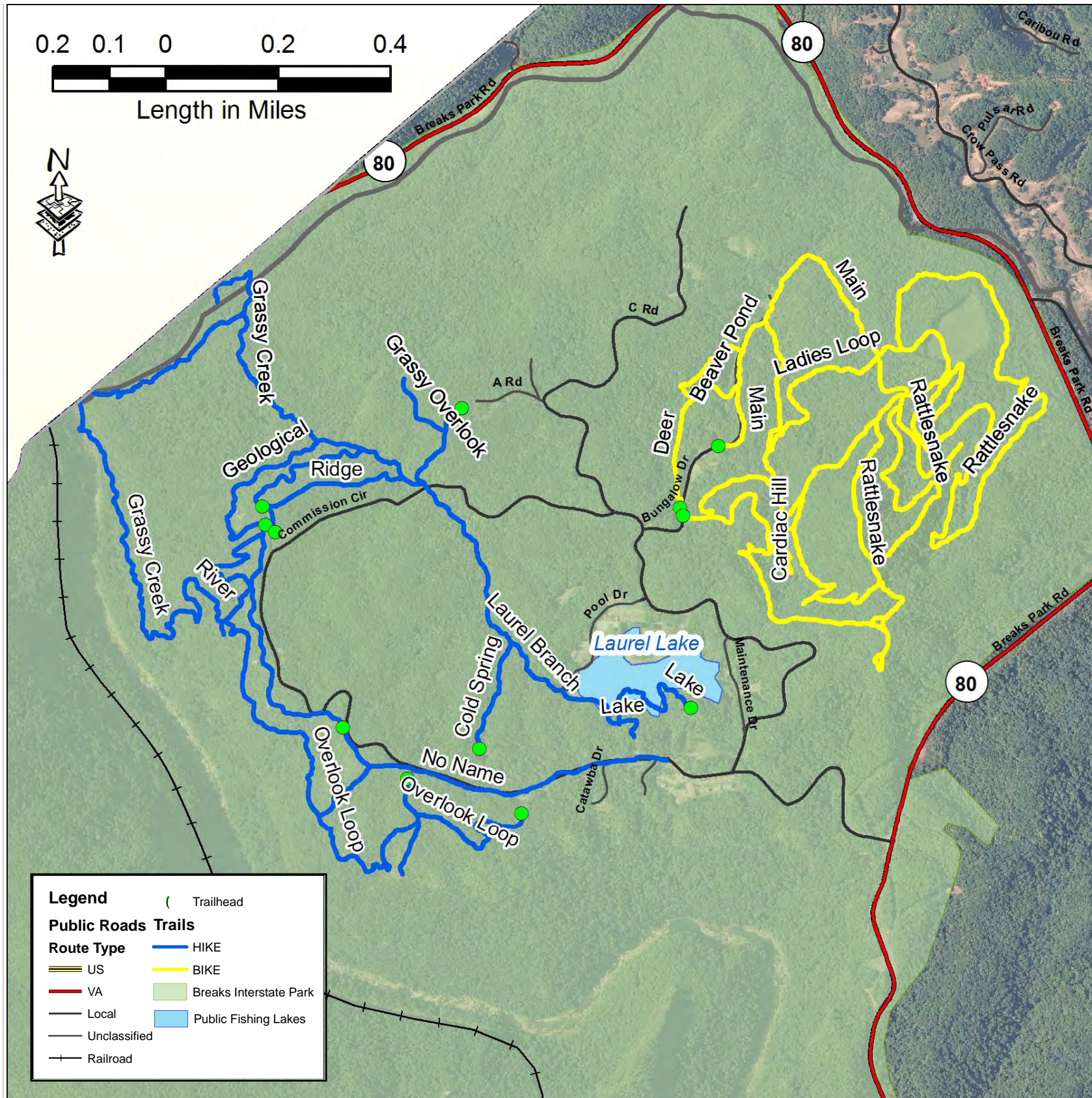
**State Park:**                      **Breaks Interstate Park**                                      (305) Exists  
Counties: Dickenson/Buchanan

**Description:** 4,600 acres with approx. 946 acres in Virginia. Known as the Grand Canyon of the South, the park has breathtaking views of the 5-mile long, one-quarter mile deep sandstone gorge carved by the Russell Fork over millions of years through Pine Mountain.

**Amenities:** The Park offers a motor lodge, two-bedroom cottages and campground with electric, water and sewer hookups. There is a convention center, restaurant, visitor center and gift shop. Also swimming pool, picnicking, amphitheater, trails for hiking and mountain biking, boat dock and fishing on 12-acre Laurel Lake, whitewater rafting on Russell Fork and horseback riding.







**DESCRIPTION:**  
Breaks Interstate Park provides well marked and maintained trails for hikers and mountain bikers in one of the region's most scenic locations. The park provides a variety of accommodation, including a campground, cottages and a lodge. The Rhododendron Lodge also offers a restaurant and conference center.

**LENGTH/TYPE OF TRAIL:**  
The Breaks Interstate Park Trail System offers 15 miles of hiking trails, divided approximately evenly between trails managed for hiking and trails managed for mountain biking.

**LEAD AGENCY:**  
Breaks Interstate Park

**CURRENT CONDITIONS:**  
All trails shown on this map are existing and currently open to the public. Trails are maintained by Breaks Interstate Park.

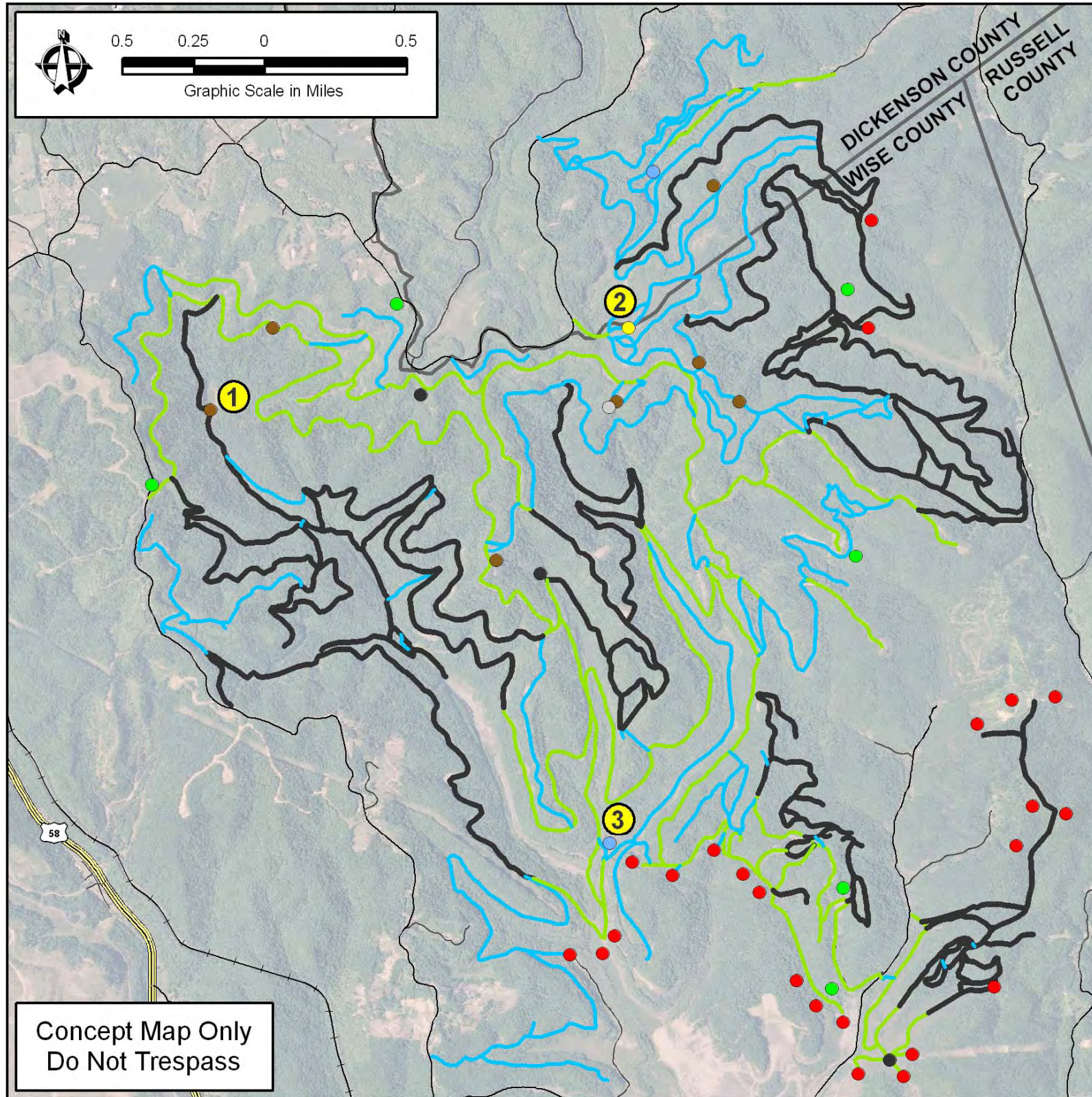
**RECOMMENDATIONS/CONCERNS:**  
As stated, the High Knob Tower Trail is a recommended addition to the City of Norton Trail System.

**CONNECTIONS & DESTINATIONS:**  
All trails are contained within the park boundary and form interconnecting loops. Some of the hiking trails end at scenic overlooks or connect trailhead areas to Laurel Lake.



# MOUNTAINVIEW ATV CLUB TRAIL SYSTEM (WISE/DICKENSON COUNTIES)

LET'S BUILD A TRAIL SYSTEM TOGETHER and REMEMBER  
Always respect private property rights by first obtaining permission  
to access someone else's land.



1) Mud Hole



2) Lookout



3) Pond

**DESCRIPTION:** The Mountainview ATV Club Trail System in Clintwood Virginia currently maintains and oversees more than 100 miles of multi-use trail in the southeast corner of Wise County. The trails are only open to club members only. The club currently has over 250 members. Their goals are to "open more trails for ATV use and to promote tourism in order to generate revenues to aid the local economy."

The trails are rated easy up to most difficult to accommodate a wide variety of riders, whether experienced or inexperienced. Members are allowed to ride ATV's, mountain bikes, side-by-sides, and horses. Camping is allowed in the parking lot as there are no facilities to house camping within the trail system.

**LEAD AGENCY/PARTNERSHIPS:**

The Mountainview ATV Club has leased property from Forest Land Group in the Virginia City area. The leased property includes over 4,000 acres with boundaries running along Bull Hill Road, Sandy Ridge Road, running into West Dante, and along Honey Branch Road, back down to Virginia City.

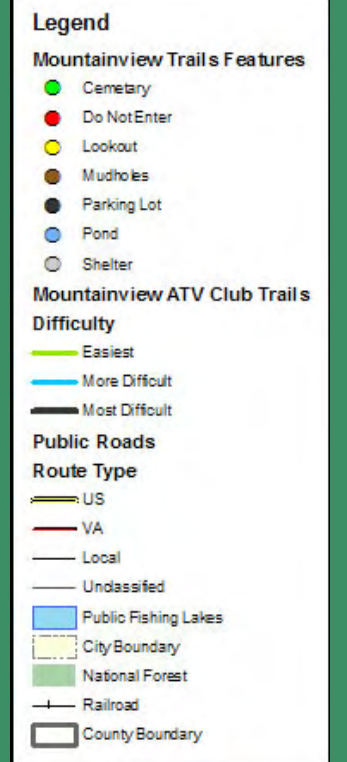
**LENGTH/TYPE OF TRAIL:**

The Mountainview ATV Club Trail System is approximately 102 miles long. It is multi-use trail system with an all natural surface that accommodates ATV's, bikes, UTV's horses, hikers.

The trails are located primarily in Wise County, although portions stretch into Dickenson and Russell counties.

**CONNECTIONS/DESTINATIONS:**

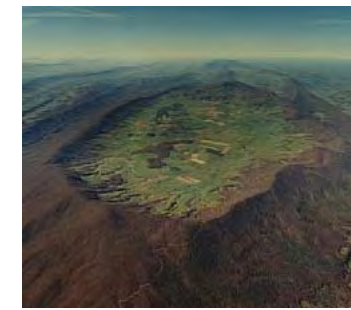
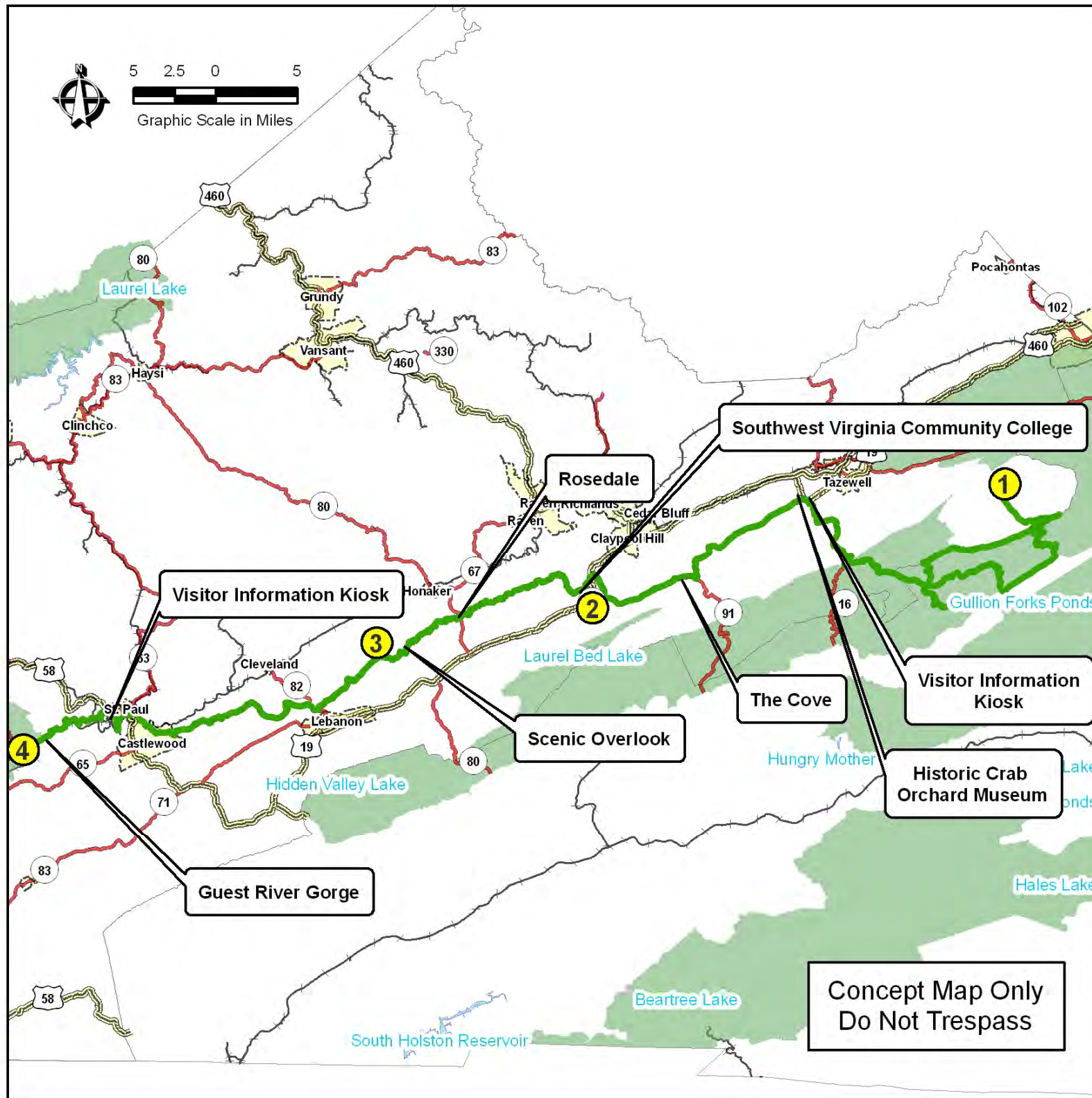
The Mountainview ATV Club Trail System is currently isolated from outside trail connections and gated to keep access private. This may change when system is adopted into the Spearhead Trail System which is being proposed.





# HEART OF APPALACHIA BICYCLE and DRIVING TRAIL (TAZEWELL, RUSSELL, WISE, DICKENSON)- Existing

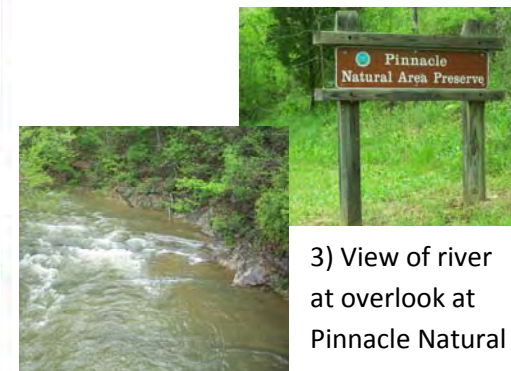
LET'S BUILD A TRAIL SYSTEM TOGETHER and REMEMBER  
Always respect private property rights by first obtaining permission  
to access someone else's land.



1.) Burke's Garden



2.) Southwest Virginia Community College



3) View of river at overlook at Pinnacle Natural Area Preserve.



4.) Guest River Gorge Trailhead

### DESCRIPTION:

This route offers back roads, rails to trails, single track, historic sites, a natural preserve area, wilderness area, Amish general store, a pub, a swinging bridge, three scenic rivers, farms and coal country, and gorgeous views in Virginia's least crowded, friendliest region, the far southwestern counties of Tazewell, Bland, Russell, and Wise.

A tour of Virginia's mountain biking scene in the western-most part of the state includes the Mount Rogers Loop in the Mount Rogers National Recreation Area near Damascus, which is a 115,000-acre wilderness region with more than 400 miles of trails, some of them exceedingly difficult and some climbing to Mount Rogers at 5,729 feet. The loop system has 8 miles of trails, winding over creeks, through valley meadows and across some of southwest Virginia's most impressive mountain peaks.

### LENGTH, TYPE OF TRAIL:

The Heart of Appalachia Bicycle Trail extends 128 miles from Burke's Garden to the Guest River Gorge. Portions of the trail are intended for bicycle, walking and automobile driving.

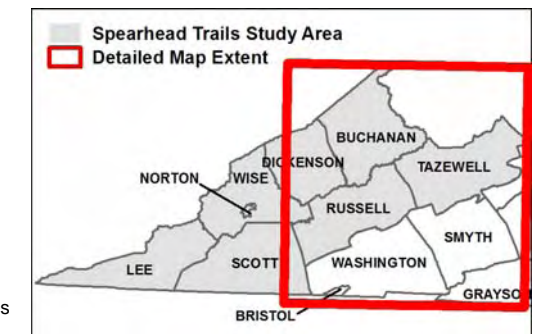
### CONNECTIONS & DESTINATIONS:

From Burke's Garden to Guest River Gorge, crosses Route 80 in Russell County.

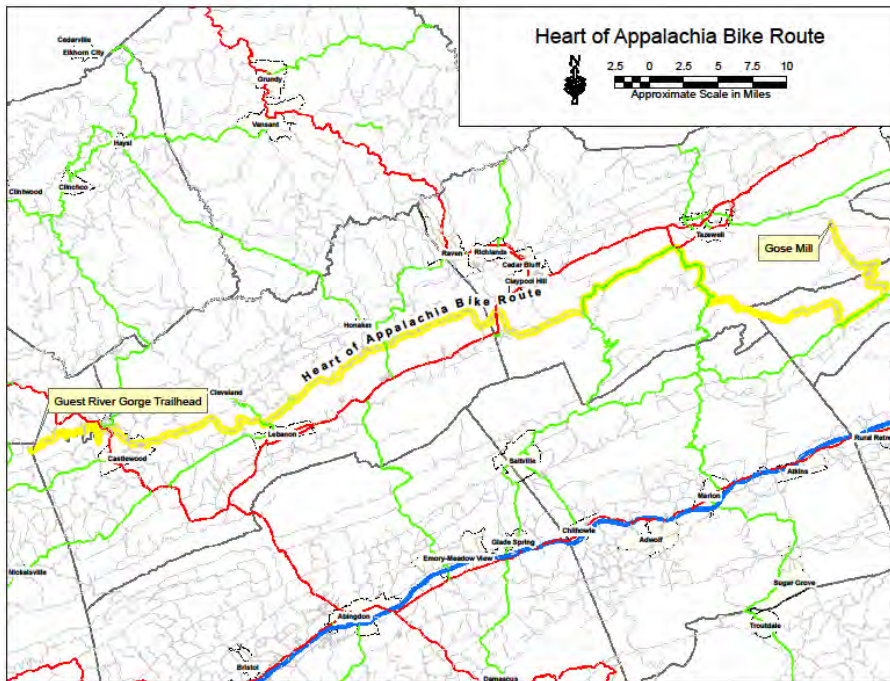
See next page for more on this.

### Legend

- Proposed Trail
- Public Roads**
- Route Type**
- US
- VA
- Local
- Unclassified
- Railroad
- National Forest
- Public Fishing Lakes
- City Boundary



## THE HEART OF THE APPALACHIA BIKE ROUTE & DRIVING TOUR



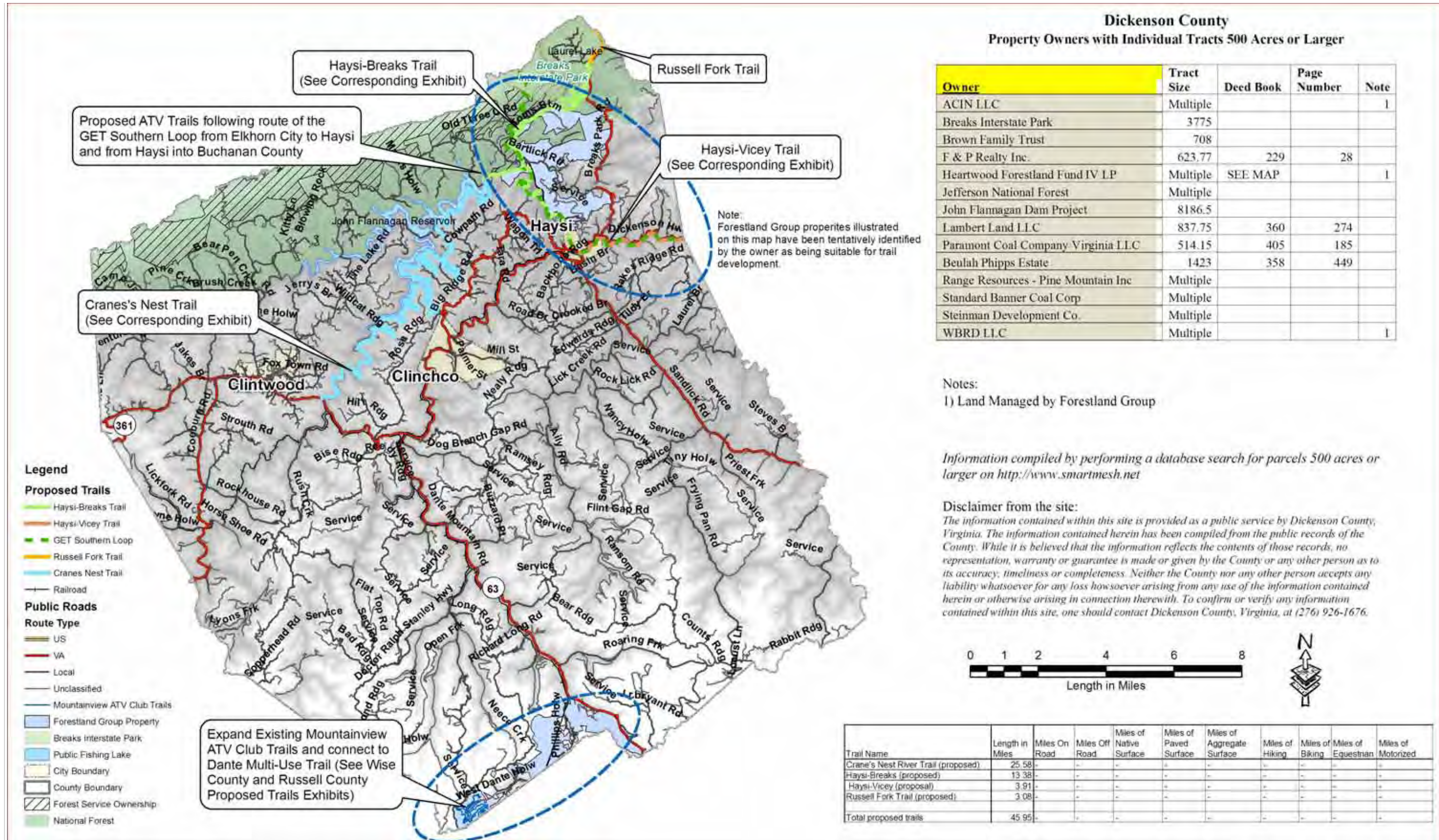
The Heart of Appalachia Bike Route is 128 miles of roads and trails in Tazewell, Bland, Russell and Wise counties. The route takes cyclists through some of the most beautiful mountain scenery in southwest Virginia, and it provides a variety of terrain and surfaces, including paved and gravel roads, rail-trails and single-track side trips.

Begin in Burkes Garden, a mountain-ringed bowl 10 miles in diameter that contains some of the most fertile farmland in the state. From there, follow the route along sparsely traveled roads in the Jefferson National Forest, across U.S. Bicycle Route 76 in Russell County, to the end at the Guest River Gorge Trail near Coeburn. Forty miles of side-trails provide access to spectacular natural features such as Russell Creek Falls and The Pinnacle at Big Cedar Falls.

This is Clinch River country. The Heart of Appalachia route offers vistas of mountain valleys and a river crossing on a swinging suspension bridge. Since the ride uses both paved and unpaved secondary roads, experienced riders say that knobby tires on a road bike or hybrid tires on a mountain bike are the way to go. Approach the Heart of Appalachia as a self-supported ride; there are few businesses along the way to provide supplies. Plan ahead, and stock up in the towns of Tazewell, Lebanon and St. Paul.

The Heart of Appalachia Bike Route is the only state bicycle route in Virginia. It was officially recognized by the General Assembly in 1999, when legislators allocated \$50,000 to provide signage for the bike route and scenic drive in an effort to promote tourism and economic development.

*Information obtained from <http://www.virginia.org/site/features.asp?featureid=364>*



**Dickenson County**  
Property Owners with Individual Tracts 500 Acres or Larger

Owner	Tract Size	Deed Book	Page Number	Note
ACIN LLC	Multiple			1
Breaks Interstate Park	3775			
Brown Family Trust	708			
F & P Realty Inc.	623.77	229	28	
Heartwood Forestland Fund IV LP	Multiple	SEE MAP		1
Jefferson National Forest	Multiple			
John Flannagan Dam Project	8186.5			
Lambert Land LLC	837.75	360	274	
Paramont Coal Company Virginia LLC	514.15	405	185	
Beulah Phipps Estate	1423	358	449	
Range Resources - Pine Mountain Inc	Multiple			
Standard Banner Coal Corp	Multiple			
Steinman Development Co.	Multiple			
WBRD LLC	Multiple			1

Notes:

1) Land Managed by Forestland Group

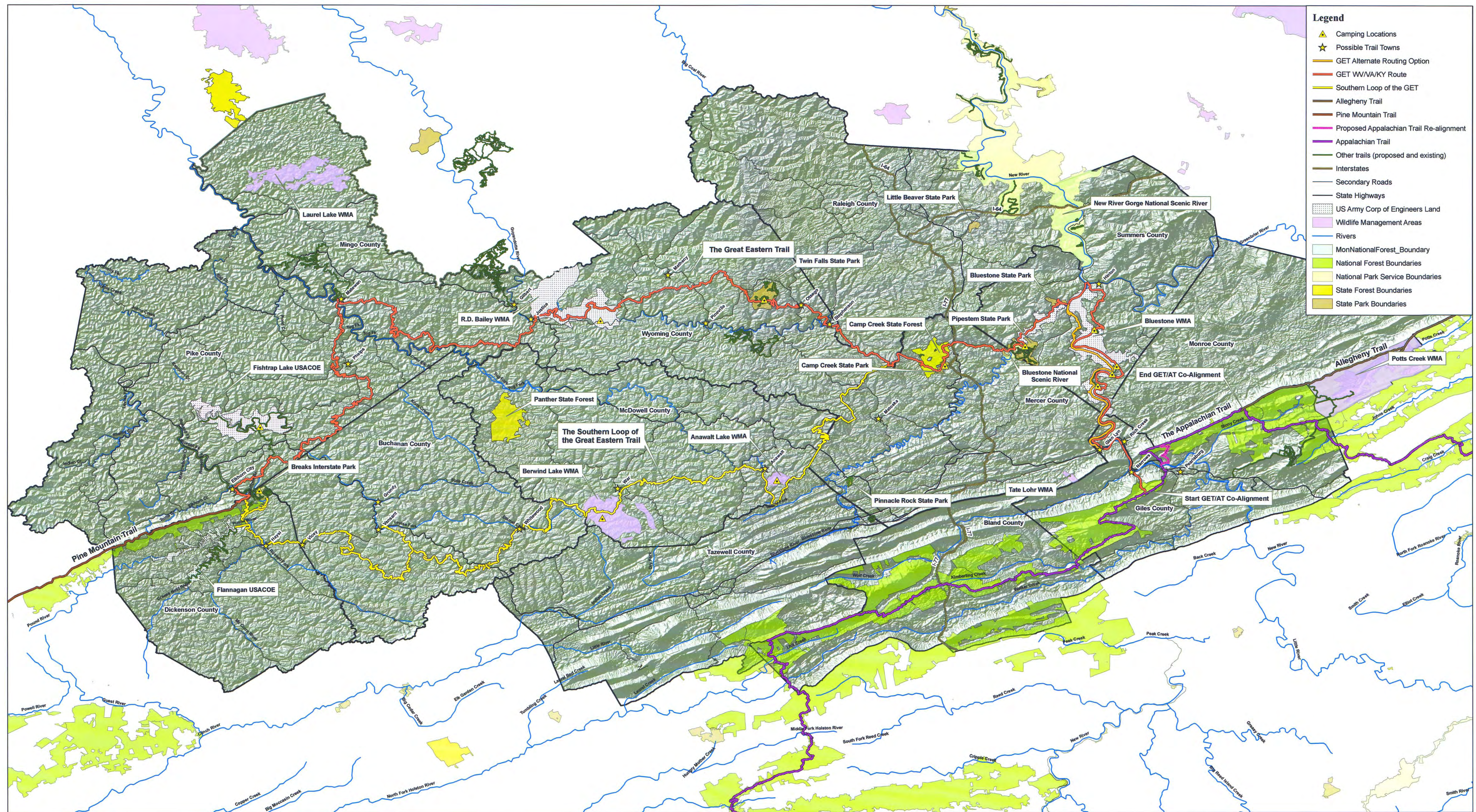
Information compiled by performing a database search for parcels 500 acres or larger on <http://www.smartmesh.net>

Disclaimer from the site:

The information contained within this site is provided as a public service by Dickenson County, Virginia. The information contained herein has been compiled from the public records of the County. While it is believed that the information reflects the contents of those records, no representation, warranty or guarantee is made or given by the County or any other person as to its accuracy, timeliness or completeness. Neither the County nor any other person accepts any liability whatsoever for any loss howsoever arising from any use of the information contained herein or otherwise arising in connection therewith. To confirm or verify any information contained within this site, one should contact Dickenson County, Virginia, at (276) 926-1676.

Trail Name	Length in Miles	Miles On Road	Miles Off Road	Miles of Native Surface	Miles of Paved Surface	Miles of Aggregate Surface	Miles of Hiking	Miles of Biking	Miles of Equestrian	Miles of Motorized
Crane's Nest River Trail (proposed)	25.58	-	-	-	-	-	-	-	-	-
Haysi-Breaks (proposed)	13.38	-	-	-	-	-	-	-	-	-
Haysi-Vacey (proposal)	3.91	-	-	-	-	-	-	-	-	-
Russell Fork Trail (proposed)	3.08	-	-	-	-	-	-	-	-	-
<b>Total proposed trails</b>	<b>45.95</b>									

# Proposed Great Eastern Trail (GET) Routing Options



- Legend**
- ▲ Camping Locations
  - ★ Possible Trail Towns
  - GET Alternate Routing Option
  - GET WVA/KY Route
  - Southern Loop of the GET
  - Allegheny Trail
  - Pine Mountain Trail
  - Proposed Appalachian Trail Re-alignment
  - Appalachian Trail
  - Other trails (proposed and existing)
  - Interstates
  - Secondary Roads
  - State Highways
  - ▨ US Army Corp of Engineers Land
  - ▨ Wildlife Management Areas
  - Rivers
  - ▨ MonNationalForest\_Boundary
  - ▨ National Forest Boundaries
  - ▨ National Park Service Boundaries
  - ▨ State Forest Boundaries
  - ▨ State Park Boundaries

Estimated GET mileage from Pine Mountain to AT co-alignment: 247 miles

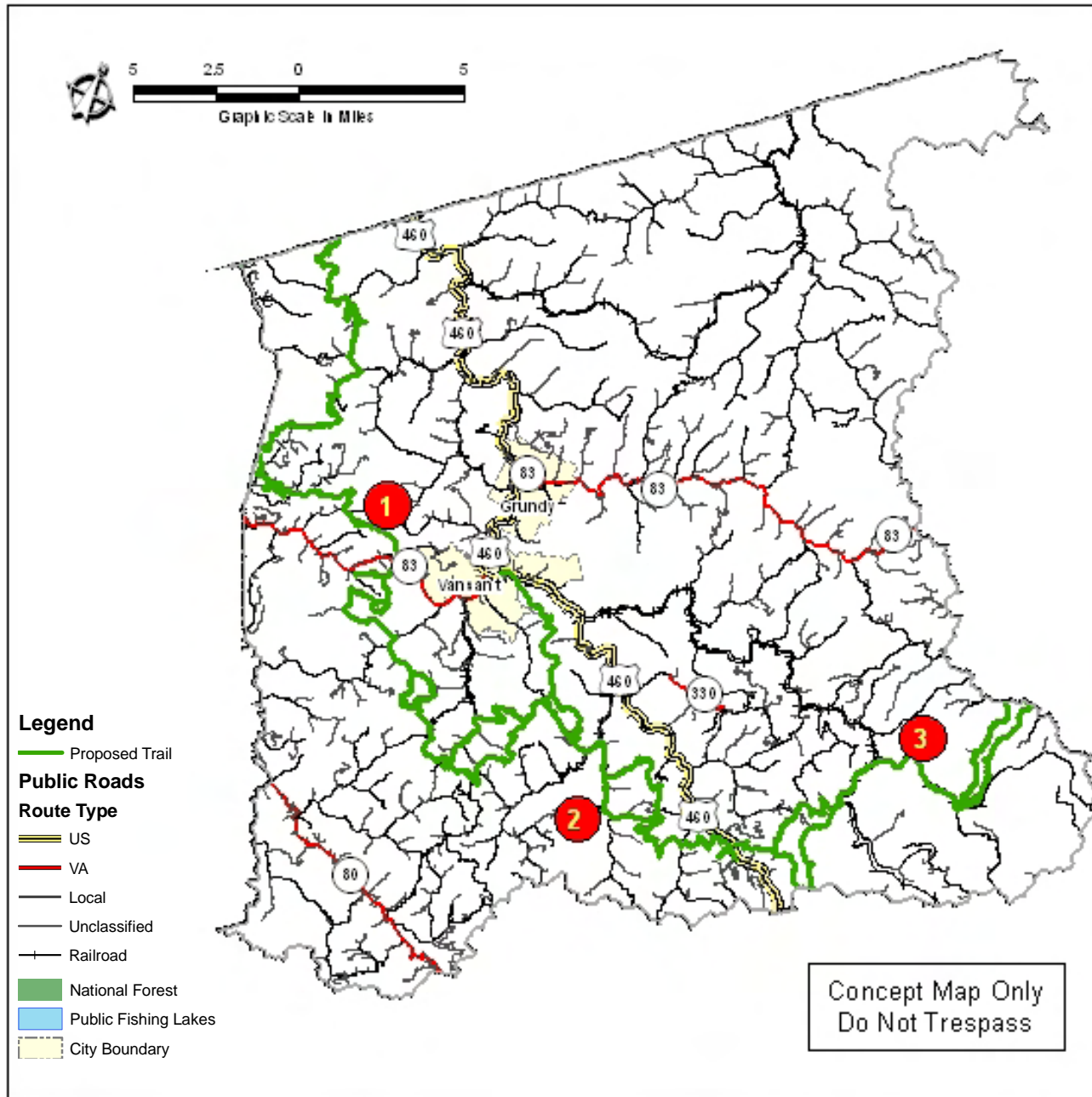
Prepared: September 7, 2009

**cd** community design  
**ac** assistance center  
College of Architecture and Urban Studies  
Virginia Polytechnic Institute and State University

This map represents preliminary conceptual plans for the proposed routing of the Great Eastern Trail (GET) from the Pine Mountain Trail to the Allegheny Trail. Portions of the proposed route are not open to the public. Limited sections of the proposed route on public lands are open for public use.



Funding for mapping work was provided by the USDA Forest Service Urban and Community Forest Program.



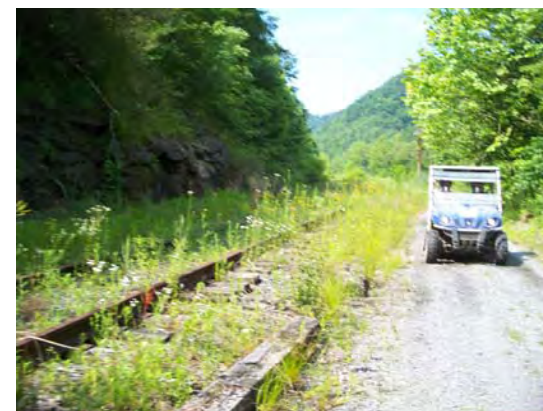
**A FEW OTHER UNIQUE FEATURES ALONG THE ROUTE**



1) Looking down on the proposed site for a trailhead and campground at Poplar Gap



2) Tunnel along route goes under the railroad tracks is a unique feature along the route.



3) Following the route of the old railroad near Whitewood makes an excellent route for the Great Eastern Trail.

**DESCRIPTION:**  
The Great Eastern Trail (GET) is America's newest long distance trail. It is modeled after the Appalachian Trail known as a premier wilderness experience for hikers and backpackers in the rugged mountains bordering Virginia and West Virginia.

**LENGTH/TYPER OF TRAIL:**  
The Great Eastern Trail will be a trail for all non-motorized users. It is an approximately 1,800-mile, long-distance trail from Alabama to New York. Although sponsored by hiking clubs up and down the Eastern Seaboard, much of the GET, especially across Virginia, will be multi-use.

**PROPOSED SOUTHERN ROUTE THROUGH SW VIRGINIA:**  
The route will go from Elkhorn City (or Pine Mountain Trail) in Kentucky, over to the VA side to the Russell Fork River, upstream to Haysi, follow the rail-trail to Vacey, to South Gap/Poplar Gap to Grundy to Vansant to Whitewood following another rail-trail to Peapatch at the Virginia/West Virginia stateline.

**LEAD AGENCY/PARTNERS:**  
Through SW Virginia, it is recommended that the Heart of the Appalachia organization serve as the lead agency.

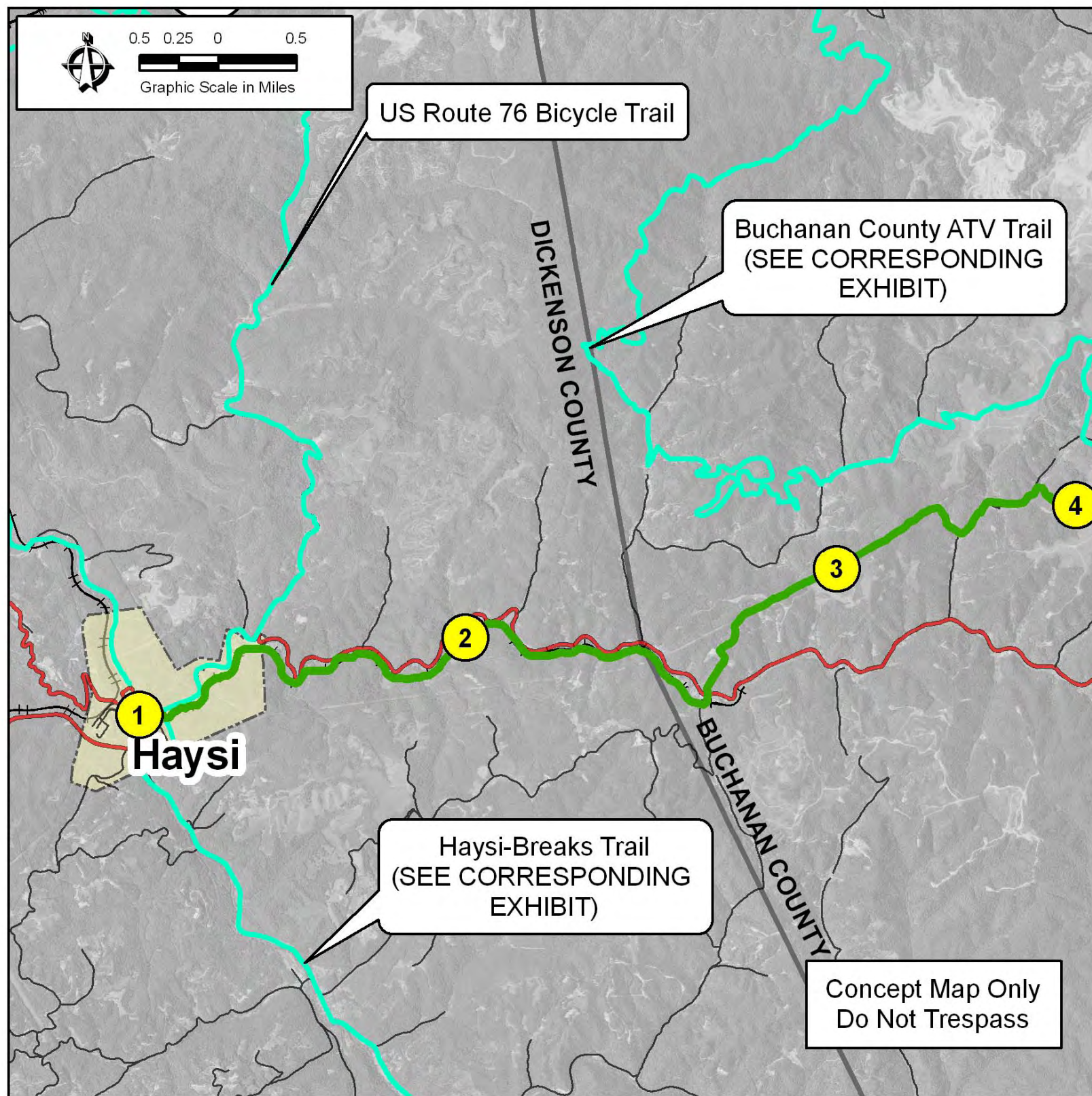
**CONNECTIONS AND DESTINATIONS:**  
The southern route through SW Virginia will connect to a northern route through West Virginia and Kentucky, creating a looped trail system through three states.

**IMMEDIATE ACTION:**  
A proposal needs to be written and submitted to the GET Board of Directors.



4) Dave Kinder points out where the GET will cross into West Virginia from Virginia at Pea Patch.





1) The Town of Haysi



2) Follows Route 83



3) Right of way segment of the route.

4) Trailhead and possible connection to Buchanan County ATV Trail

**DESCRIPTION:**

The proposed Haysi-Vicey Trail follows an existing trail originating in the Town of Haysi at the intersection of the Haysi-Breaks Trail and the US Bicycle Route 76. The trail follows along route 83 and eventually heads away from the road and onto a power or gas line right-of-way, ending at an open area near the Town of Vicey which will serve as the Vicey Trailhead.

**DESTINATION:**

This proposed trail will provide access from the Town of Haysi into Buchanan County, and more specifically, the proposed Buchanan County ATV Trail, which passes through the Vicey Trailhead for the proposed Haysi-Vicey Trail. The addition of this trail to the system of trails in this area will provide much needed connectivity between the Buchanan County Trail system and the Dickenson County Trail System.

**LENGTH/TYPE OF TRAIL:**

The Proposed Haysi-Vicey Trail is 7.6 miles in length and will serve as a connector between the towns of Haysi and Vicey. This will be a multi-use trail for both motorized and nonmotorized users.

**CURRENT CONDITIONS:**

The trail route already exists. Due to its previous use as a gas road, the path is wide and easy to navigate whether on a horse, bike, walking or motorized vehicle.

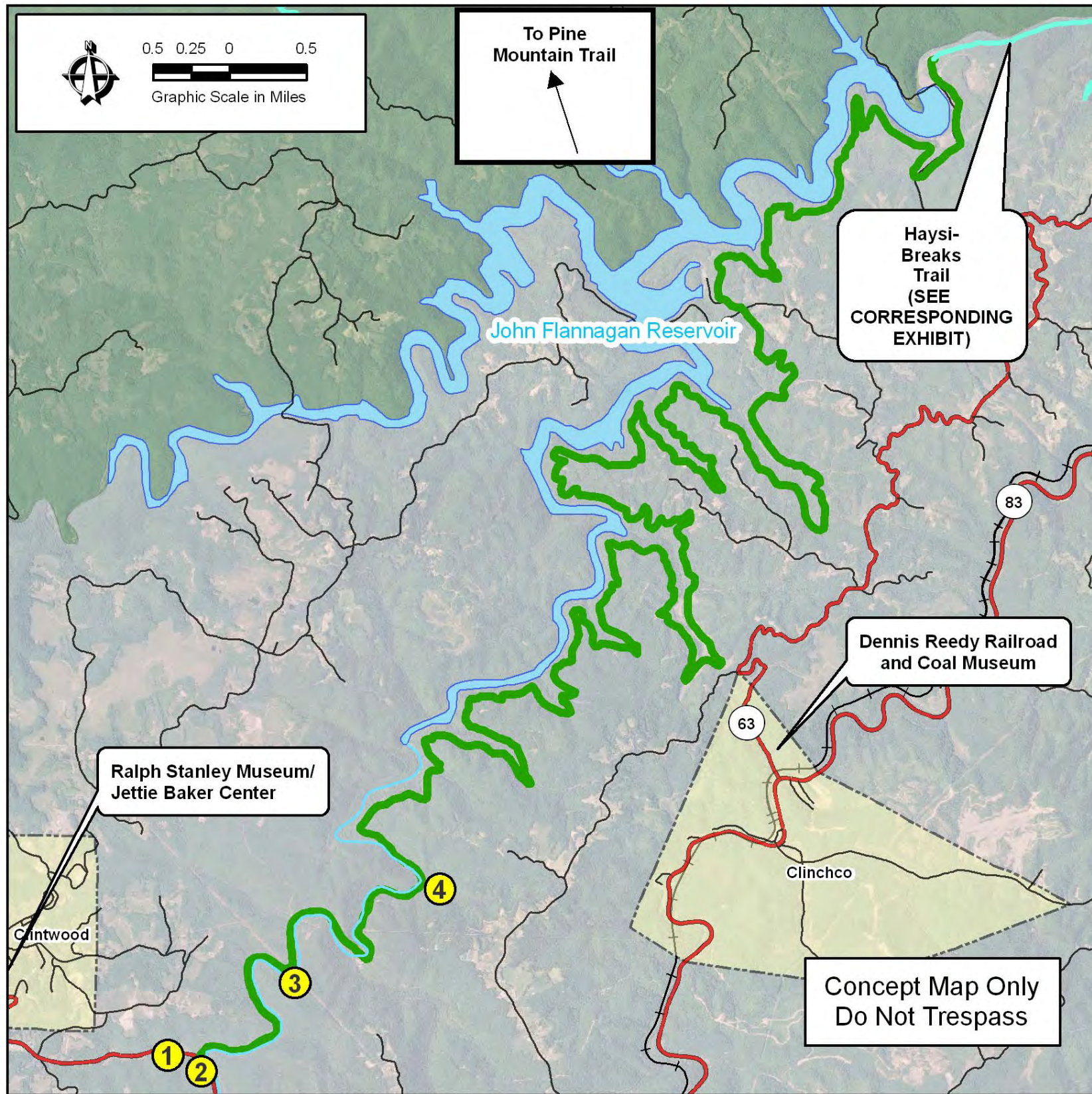
**CONNECTIVITY:**

Proposed trail connects Haysi to Vicey, and intersect the 76 Bicycle Route. It is also part of the proposed southern route of the Great Eastern Trail System which runs from Elkhorn City KY through both Dickenson and Buchanan counties, intersecting with an existing ATV trail in Buchanan County before heading east into West Virginia.

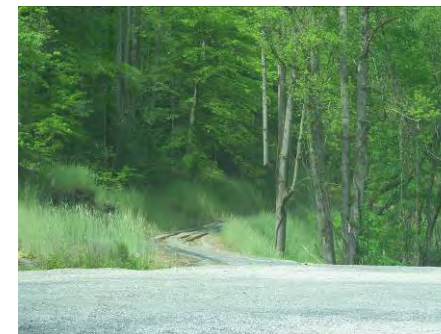


Legend	
	US Bicycle Route 76
	Haysi-Vicey Trail
	Haysi-Breaks Trail
	Buchanan County ATV Trail
Public Roads	
Route Type	
	US
	VA
	Local
	City Boundary
	Railroad
	County Boundary

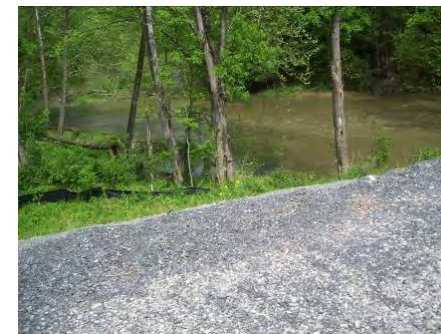




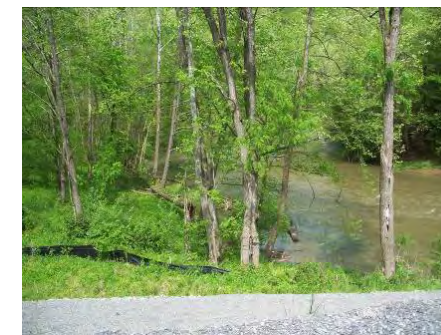
1) Gas station and restaurant at the trailhead



2) Crane's Nest Trailhead



3) Handicapped accessible trail down to river.



4) View of river from trailhead parking area.

**DESCRIPTION:**  
The Crane's Nest River Trail is currently in the process of being established, and when complete will be located as shown, originating in the Clintwood area and becoming part of the proposed Haysi-Breaks Trail in the Breaks Interstate Park area. This trail will provide scenic views of the Pound River and John Flannagan Reservoir that can only be viewed via the Crane's Nest Trail.

**LENGTH AND TYPE OF TRAIL**  
The Crane's Nest River Trail is a 25 mile multi-use trail for biking, hiking and horsebackriding.

**TRAILHEAD:**  
A former gas station has been converted into a restaurant. The owners plan to rent bikes at this facility.

**CONNECTIVITY:**  
The connective functionality of this trail is to link the cities of Clintwood and Clinchco with the trail opportunities in the Breaks Interstate Park area.

The addition of this trail will provide trail connectivity to existing trails in the northern section of Dickenson County which, in turn, could connect with existing trails in Kentucky.

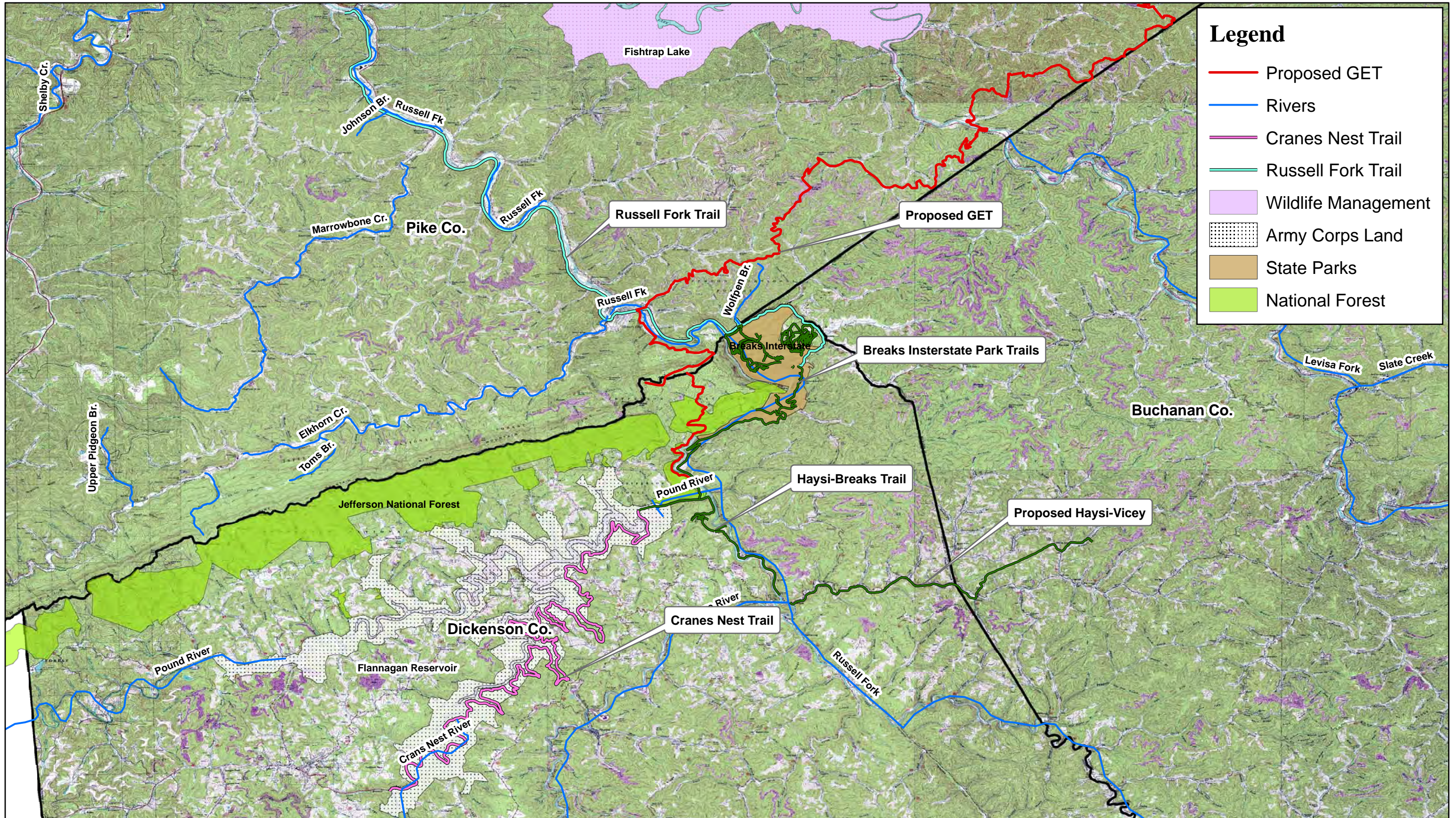
**CURRENT STATUS:**  
The trail was under construction at the time of this report. (Summer 2009)

**Legend**

- Cranes Nest Trail
- Public Roads**
- Route Type**
- US
- VA
- Local
- Public Fishing Lakes
- City Boundary
- National Forest
- Railroad



# Cranes Nest and Russell Fork Trails



**Legend**

- Proposed GET
- Rivers
- Cranes Nest Trail
- Russell Fork Trail
- Wildlife Management
- Army Corps Land
- State Parks
- National Forest

