

Knott County, Kentucky

STRATEGIC PLAN



"Elk Capital of the East"

knottcountyadventure.com

Kentucky
UNMATCHED SPIRIT

FOREWORD: PREVIOUS EFFORTS IN ADVENTURE TOURISM

FOREWORD

Knott County's Previous Efforts in Adventure Tourism

Knott County in Southeast Kentucky has embraced the idea of adventure tourism. Since 2006 the Knott County Fiscal Court has made "establishing a COUNTY-WIDE Adventure Tourism Park System" one of their primary goals.

To this end, Knott County has:

1. Acquired 10 acres and built a Training Center that includes both a training area and skills test course specifically for ATV and dirt bike rider to become certified.
 - There is an opportunity to add (*at a very minimal cost since the property is already purchased and the facility is already built*) an on-road motorcycle training course at this site thus making the Training Center multi-purpose for a much larger user group.
2. Obtained an easement on 600 acres of private property to create an ATV trailhead and that provides access to ATV trails within the northwest quadrant of the county.
 - There now needs to be a plan on how best to obtain access to other trails that lead off the 600 acres so the property does not get overly used and abused and have the trails properly identified and authorization obtained to access them.
3. Developed a partnership with Western Pocahontas Company and developed nearly 100 miles of horseback riding trails in the northwest region of the county that attracted 3000 people and 1500 horses to the site for a three day county sponsored trail ride.
 - There needs to be a plan developed that will enable people from all over to use the property on a more permanent basis other than just during the three-day event. Access issues will need to be addressed, infrastructure developed to handle such a load without destroying what makes the area so appealing in the first place, safety must be considered and maintenance issues.
4. Identified three other potential sites for publicly accessible ATV trailheads within the county with interest expressed by specific property owners to form a partnership with the county to establish trailheads.
 - Partnerships need to be developed for the trailheads before county funds can be used to assist the landowners. And more importantly easements need to be obtained to access the actual trails themselves, basic infrastructure developed such as roads to the sites, parking areas, restroom facilities. There needs to be a plan developed to address this.

ADVENTURE TOURISM IS HAPPENING ACROSS KNOTT COUNTY!

Knott County attracted over 500 people to their first "Ground Poundin" ATV Trail Ride in the Spring of 2007 and nearly 700 people from 12 counties and four states to the Hare Scramble sanctioned trials during that same summer. The first equestrian trail ride two years ago

FOREWORD: PREVIOUS EFFORTS IN ADVENTURE TOURISM

attracted 500 riders and 400 horses. This Fall, that same event attracted nearly 4000 people and 2500 horses to the area staying on average 3.5 days spending on average \$92.82 per day in the area. The economic impact of just this one event was over \$1.2 million dollars for the region. And each month, more and more people are coming to view elk in Knott County.



Hare Scramble held at Sutton Memorial Park



Elk Viewing near Elk View Drive



Early morning on the first day of the Spring Horse Ride

Knott County has also within the last two years built a \$7.2 million dollar, 60,000 square foot Sportsplex that is attracting visitors from 23 counties and five states. Opening in the Fall of 2007 the facility hosted 48 basketball teams and their families in a two-day tournament in October, 53 teams in November and in December, 68 teams. That equates to over 1500 people who came to Knott County over a three month period just to play or watch basketball. The Sportsplex has now started volleyball and bowling leagues. In the summer baseball leagues and tournaments are played on site and eventually soccer will be added. Numerous knife & gun shows have been held as well as the first ever Elk Expo which drew thousands.



And in the Fall of 2006, Knott County built a skate park for both bikes and skateboarders and opened a community pool.



This is a county that has limited lodging, two campgrounds that stay full all the time, and very few restaurants, many of which are actually gas station/fast food restaurants combined!

Knott County needs a strategic plan to fully capitalize on its Adventure Tourism opportunities!

STRATEGIC PLAN FOR ADVENTURE TOURISM IN KNOTT COUNTY

Strategic Plan

Developing a Strategic Plan for Adventure Tourism in Knott County

In 2006, it became the vision of Judge Randy Thompson to develop a countywide Adventure Tourism Park System across Knott County. In 2006, WMTH Corporation was hired by the Knott County Fiscal Court to help on this endeavor. A team headed up by Debby Spencer with WMTH Corporation along with Economic Research Associates out of Washington DC and both Summit Engineering from Pikeville and Barge Wagoner Sumner & Cannon out of Tennessee were instrumental in developing the first strategic plan. From that plan, the ATV Safety Training Center was built, numerous trails (both ATV and horseback riding) were established and Knott County was declared “Elk Capital of the East”. (See *FOREWORD* for more on previous efforts of Knott County in Adventure Tourism)

In 2007, the state launched a study to develop a comprehensive plan for adventure tourism in southeastern Kentucky. The study recognized Knott County as “a leader in innovative, county-wide trail projects”. The study also noted the following:

- Active trail sports are a major asset of Knott County with particular attention to ATV's and equestrians due to the overall quality of the landscape and participation in the SKYward Trail project.
- Knott County has clearly taken major strides in developing wildlife viewing opportunities including the Adventure Park System, Starfire Wildlife Management Area, and Littcarr Wildlife Viewing Area.
- And that Carr Creek Lake and associated state park can provide excellent fishing and boating opportunities in Knott County.

To further Knott County's efforts, the study recommended that both county and tourism leadership should:

1. Continue to organize events, industry sponsorship, user groups, and facility development/maintenance supporting the expansion of this system.
2. Coordinate with Mountain Trail Development Coalition and relevant trail sport interest groups to identify priority projects to enhance trails as recommended.
3. Highway 80 is the major corridor in the county. Campaign signage and information kiosks should be strategically placed to provide a sense of arrival and travel information.
4. Position Knott County as an essential element for tour itineraries that include ATV trails, equestrian riders, hiking, and wildlife viewing.
5. Actively participate in coordination efforts for regional goal setting and marketing initiatives associated with the “Kentucky Adventure Terrain – Nature's Playground” branding campaign.

STRATEGIC PLAN FOR ADVENTURE TOURISM IN KNOTT COUNTY

KNOTT COUNTY RECEIVES FUNDING FOR DEVELOPING STRATEGIC PLAN

In 2008, Knott County Fiscal Court applied for and received a flexi-grant from the Appalachian Regional Commission through the Kentucky Department of Local Government to expand the plan further. The Fiscal Court hired WMTH Corporation to assist in this endeavor. As part of the research and data collection process, the consultant met with the Knott County Tourism Commission and asked for their assistance in setting up community meetings throughout the county to obtain public input and ideas for inclusion in the strategic plan. It was originally planned to survey citizens, clubs, county and city officials, etc. plus hold two public meetings within the county. The consultant found it much more advantageous and informative to hold public meetings in different parts of the county to ensure greater participation. All of the clubs, organizations, city and county officials etc. were invited to these meetings and we averaged around 20 or more people per meeting and continue to receive wonderful feedback and involvement by the public.

First Step: Community Meetings

During the summer of 2008, the Knott County Tourism Commission set up seven community meetings throughout Knott County. The goal was to:

1. Determine what the communities considered were the top priorities in adventure tourism in order for the county to reach its full potential.
2. And what communities felt were some of the opportunities to pursue in their particular areas.

The first meeting was with the Knott County Tourism Commission themselves to get their perspective and ideas then meetings were set up at the following locations and the public encouraged to attend through personal invitations from tourist commission members, the local newspaper and the radio station.



The community site locations included: *(See page 8 for more details from each meeting)*

- [Carr Creek U.S. Corps of Engineers office for meeting with tourism commission,](#)
- [Hindman Settlement School,](#)
- [Alice Lloyd College,](#)
- [Carr Creek Marina area,](#)
- [Holly Hills/Mall Area,](#)
- [Beckham Combs Community Center,](#)
- [Carrie Community Center,](#)
- [and Jones Fork Fire Station.](#)

STRATEGIC PLAN FOR ADVENTURE TOURISM IN KNOTT COUNTY

OVERVIEW OF RECOMMENDATIONS FROM PUBLIC MEETINGS

Recommendation Number 1:

The one recommendation brought out in every meeting was lodging.

- All seemed to agree that a hotel or multiple hotels at Chestnut Mountain Development near the Sportsplex was the most logical location.

Note: Two hotels have expressed possible interest.

- Other lodging recommendations included:
 - Developing B&B's, cabins and campgrounds throughout the county. Potential sites and locations mentioned:
 - A horse campground and possibly cabins near Littcarr.
 - Potential B&B and/or small motel near Holly Hills – Recommend a partnership between ALC and Hindman Settlement School be worked out to insure occupancy during particular times of the year.
 - Carl Perkins home might be a possible site for a B&B/small museum due to its historical significance.
 - Cabins in and around Carr Creek Lake are needed.
 - Potential for campgrounds in the Beaver Dam (Consol area).
 - Convert Beckham Combs School classrooms into lodging unit.
 - Both the grounds at Beckham Combs School and Caney School might be used for campgrounds since both already have water, sewer and electricity and could accommodate up to 30 campers.
 - Potential lodging at Pioneer Village in existing cabins.
 - There were a number of potential sites and interested parties in developing campgrounds and cabins throughout the county in particularly the Jones Fork area and a site near Raven if the county agrees to help market them.
 - And county / grant funding has been set aside to develop an RV Park near the ATV Safety Training Center once land has been purchased.

All seemed to agree that whatever was built, it should be built well. No one wanted to see shacks or used worn out trailers. Knott Countians desired to become a “premier quality location to vacation”.

Recommendation Number 2:

- All groups tended to agree that a restaurant offering fine dining and atmosphere was very much needed in the county. Again, people tended to see the Chestnut Mountain area near the Sportsplex as the most logical location for such a facility.

Recommendation Number 3 which was consistently agreed upon in each of the meetings:

- The need for a shuttle service which could offer elk & wildlife viewing opportunities and transport visitors from the Sportsplex and lake area to downtown Hindman to enjoy the museums, Artisan Center and working artists on Main Street and possibly include lunch at the Artisan Café, Mall area or Alice Lloyd College.

PLEASE NOTE: All of the above could be an opportunity for entrepreneurial businesses.

STRATEGIC PLAN FOR ADVENTURE TOURISM IN KNOTT COUNTY

- The parking issue at Hindman was also discussed at length at a number of the meetings. Some felt the shuttle service was a possible solution. Others felt a parking structure was needed to accommodate increased traffic as tourism increases in the area.

Recommendation Number 4:

- Better signage is needed throughout the county so people traveling through can find attractions and know that the area has a lot to offer.

ACTION TAKEN: Bernice Amburgey and Debby Spencer are working on a signage plan to submit to the Kentucky Departments of Transportation and Tourism, Arts & Heritage.

Recommendation Number 5:

- Need to capitalize on the fact that Knott County is the “Elk Capital of the East” by using elk in everything that is done including signage, publications, billboards, special elk-themed events, t-shirts, logos etc.

(See Knott County Marketing Plan document for more on this.)

ACTION TAKEN: An elk view station has been established on Elk View Drive near Sutton Memorial Park off Hwy 1098. Others need to be developed and both directional and interpretive signs added.

- *Potential site locations include Thornsberry Branch Area*

Recommendation Number 6:

- Establish more trails as part of the vision for establishing a “county-wide adventure tourism park system”.
 - Horse Trails:
 - Need day both use parking or overnight camping at trailheads.
 - Develop horse campgrounds at Littcarr park area and near Sutton Memorial Park.

There are 6 miles of horse trails identified and mapped near the Carr Creek area

- Shingle Branch and other horse trails already mapped - contact Bernice.
- Contact private landowners.

- ATV Trails:
 - ATV trails need to be GPSed and mapped in the Red Fox and Fire Trail areas and trailheads established.
 - Potential area for both ATV and horseback riding trails to be established in the Jones Fork area connecting to the Fire Trail through Holly Bush then extended all the way into Virginia.
 - Another potential trail system is in the Big Branch area connecting with both Perry and Letcher counties. Other areas include: Knob area, ICG property, Raven area and Hemp Patch.

- *ACTION: Landowners along these trails need to be identified and contacted.*

STRATEGIC PLAN FOR ADVENTURE TOURISM IN KNOTT COUNTY

- Potential for developing mountain bike trails throughout the county
- Establish wildlife viewing trails and areas and add interpretive signs
 - Carbon Glow near Letcher is an excellent place to view wildlife.
 - Pigman Bottoms near Pinetop one can view free-roaming elk.
 - Bird watching areas include Burgey's Creek.
 - *Excellent site for birdwatching but needs interpretive signs.*

Recommendation Number 7:

- Already established bike routes across Knott County are noted on state highway map with safe havens at Carrie Post Office and Alice Lloyd College. These designated roads are part of the TransAmerica Bike Route Across America. Knott County needs to capitalize on this.
 - Work with bicycle clubs and the state to market the route and add additional routes.

Recommendation Number 8:

- Motorcycle routes have been mapped but need to be promoted.
 - Need to find out more about Budweiser and Combs Custom Cycles.
 - There is a connection with NASCAR and Petty racing. Find out more.

Recommendation Number 9:

- Hunting opportunities include but are not limited to: elk, deer, grouse, quail, coon and fox.
 - Entrepreneurial opportunities for hunting guide service and hunting kennels for those living in larger cities to have a place to keep their dogs.
 - Need to work with local land owners to identify and map where people may hunt.



There were many other recommendations including, but not limited to:

- Need for greater marketing of Carr Creek Lake including both fishing and boating opportunities.
- Potential for shooting range, clay shooting and archery shoot.
- Also explore expanded use of Carr Creek Fish & Game area.
- Potential shooting range in Carrie Community area.
- Possibility of incorporating Cordia Community Center and High School into tourism plan.
- Camp Nathanael is an interested partner in tourism.
- Better use and clean up of Troublesome Creek as a tourism asset.
- New welcome center proposed at the intersection of Hwy 160 & 80 through an agreement with Yoder's and the Knott County Tourism Commission.
- County funding available for amphitheater – Need to locate on public land.
- New Knott County/Letcher County airport is “in the works”.
- Need to develop more eco-friendly tourism opportunities.
- Need to encourage county-wide clean up.
- Work with both PRIDE and CEDARinc.org.
- Develop a craft trail.

STRATEGIC PLAN FOR ADVENTURE TOURISM IN KNOTT COUNTY

- Establish a Knott County Land Use Committee and have chapters within the county to address special needs for those areas.

Since the meetings many things have occurred, a few of which are noted below:

1. A site was identified for a second elk viewing station in another portion of the county. Representatives from the Rocky Mountain Elk Foundation have visited the site as has members of Pippa Passes City Council representing that particular region of the county. They are now working with local land owners to put in food plots to encourage a greater number of elk to come to the site. The City has also agreed to periodically police the area which happens to be on the old highway loop which is no longer used. We are also working with the marketing committee to place one of the proposed interpretive signs at this location.
2. The U.S. Corps of Engineers has offered land through a lease agreement for both an equestrian trailhead and campsite and have offered to work with the county to provide both the use of showers and restroom facilities to those staying at the trailhead/campsite.
3. The LKLP organization has stepped forward and offered the county the Pioneer Village Property which includes restroom facilities, a covered pavilion, large rock fireplace, two log cabins (one of which is air conditioned), plus a small two-stall log stable. The Fiscal Court is now looking into the option of developing a trail to connect this site to the U.S. Corps of Engineers site which crosses through reclaimed coal property in which the trails already exist.
4. A couple is renovating the old school house at Burgey's Creek and considering opening it as a meeting place for boy scouts and other groups. They also expressed interest in developing horse trails and trailhead on their property or possibly a golf course.

Others have stepped forward with interest in developing trails across their properties, building cabins and other offerings conducive to building a true "adventure tourism park system" across the county.



A second elk view station near Pippa Passes has been identified.



Proposed trailhead for Shingle Branch Equestrian Trails



One of the structures at Pioneer Village

STRATEGIC PLAN FOR ADVENTURE TOURISM IN KNOTT COUNTY

Over the following months, the consultant conducted site visits to many of the areas recommended or suggested for potential development. These include but are not limited to the list provided below, many of which will be addressed in more detail later in this document.

In the southern portion of the county:

- A potential site for a horse camp on U.S. Army Corps of Engineers property.
- Potential camp near Carr Creek Lake on land owned by Corps but leased to county.
- Potential trailhead for horse trails around Carr Creek Lake.
- Potential campground and access to hundreds of miles of trails at Pioneer Village that offers restroom facility, large pavilion, fireplace, a cottage, large two story log home and a two stall log stable.
- Potential for developing ATV trails that access from Red Fox leading into Letcher County.
- Opening a restaurant on the water at Carr Creek Lake.
Note: Restaurant opened this summer at Carr Creek Lake Marina.

In eastern portion of the county:

- Potential private development for lodging at the Burgey's Creek school house or developing horse trails or possibly a golf course on reclamation land above the site.
- Developing an elk view station just past Pippa Passes off the old highway.
- Developing cabins and trail in the Jones Fork area.
- Developing a trailhead on the Fire Trail.
- Potential for connecting trails into Floyd County.

In the northern portion of the county:

- Developing a campground near the ATV Training Facility with water, electricity and a dump station.
- Developing a pedestrian/bike trail connecting Sutton Memorial Park to Elk View Station.
- Developing a scenic byway through three counties.
- Expanding the trail system for both horses and ATV's into Breathitt County.

In the central portion of the county:

- As recommended in the state's Adventure Tourism Study, information kiosks should be strategically placed to provide a sense of arrival and travel information.

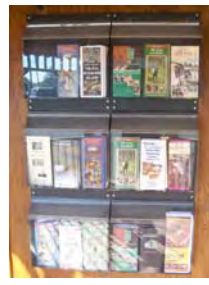
ACTION TAKEN: A gazebo has been built and now is strategically placed at the corner of Hwy 160 and Hwy 80 in front of Yoder's, a very popular store for both visitors and residents. The gazebo is open 24/7 and offers visitors maps and tourism information on all the offerings throughout Knott County. Tourism information is also provided at the Sportsplex, Artisan Center and other strategic locations.



Gazebo Tourism booth



The gazebo is handicap accessible



Information is available 24/7 and lighted by a solar panel on top



Public Meetings – Community Input

Gathering public input for Adventure Tourism in Knott County

During the month of June and July, eight public meetings were held in different parts of the county for community input and ideas in adventure tourism.

Anticipated outcomes of strategic planning meetings:

1. Compile complete list of current and potential offerings in each area
2. Educate locals of current offerings and opportunities
3. Address infrastructure needs and concerns

The public meetings provided an opportunity to encourage people to share ideas about what they would like to see happen in the next 5 years for Knott County Tourism. The first meeting was with the Knott County Tourism Commission to get their input, followed by public meetings in the communities of Hindman, Pippa Passes, Carr Creek, Mallie, Vest, Carrie and Mousie.

On the following pages, an overview of the meeting with the Knott County Tourism Commission and each of the public meetings is provided*. A combined overview of all recommendations is provided in the previous section of this document.

**More complete minutes for both the Tourism Commission meeting and the meeting in Hindman are available upon request.*

COMMUNITY MEETINGS FOR PUBLIC INPUT

Tourism Commission Input

The first meeting was held with the Knott County Tourism Commission at the U.S. Corps of Engineers office on Carr Creek Lake to get each commissioner's view of what they felt each area had to offer in adventure tourism and priority projects they would like to see developed. Below is an overview from the meeting:

Carr Creek Area - Bernice Amburgey

- a. Carr Creek Lake (600,000 to 700,0000 visitors annually) - 150 slips and houseboats
- b. Carr Creek Wildlife Management Areas
- c. Horse Trails - 6 miles - Ky River/ Private landowners.
 - Need day use or overnight camping if possible.
- d. Red Fox – ATV
- e. Red Fox – Park Community
- f. Carr Creek Fish & Game
 - Shooting area and clubhouse
- g. 4-Star Village
 - Rent pond, shelters, catering.
- h. Events by Rangers – Clean-up, Archery, Fishing for Kids.
- i. Red Fox area has a community park and ATV Trails.
 - Need to GPS map and mark ATV Trails.
- j. Hunting, Fishing, Hiking

Action: Develop a horse campground and possibly cabins for lodging.

Mallie Area – Richard Pigman

Current offerings: Offers a number of annual events but need to coordinate calendars with other events happening within county.

- a. Data collected on attendees? Where are they coming from?

Action:

- Need to capitalize more on music events.
- Need a hotel or B&B at Holly Hills.
 - i. Possible location behind bank.
 - ii. Commitment on numbers from ALC and Settlement School.
 - iii. Contact Rudean Adams, manager at Holly Hills.
- Other Potential:
 - i. Carl Perkins home – Historical site.
 - ii. Great location for a B&B.
 - iii. Better utilization of the tank currently on display.

Pippa Passes Area – Stephanie Damron

Things to capitalize on:

- a. Historical
- b. Café
- c. Tours
- d. Landmarks

COMMUNITY MEETINGS FOR PUBLIC INPUT

Action:

1. Entrepreneur Center being developed at Alice Lloyd College for those wanting to start new businesses in the county.
2. Elk viewing opportunity in lower Caney.
 - a. Need directional signage, food plots, interpretive signs.
 - i. Contact RMEF for assistance.

Carrie Community Area – Sylvia Combs

Things currently offered:

- a. Music shows
- b. Dinner Wednesday night
- c. Carrie newsletter
- d. Camp Nathaniel
- e. Cordia Community Center and High School – This area needs to be included in the tourism plans.

Action:

1. Plans to develop a walking track.
2. Wish list to add benches to set around a water fountain with gold fish and others.
3. ATV Trail Potential:
 - i. Big Branch Area – Perry/Letcher

Hindman Area – Stuart Burrill & Rebecca Ware

Things currently offered:

- a. City added benches and flower pots.
- b. Artisan Center & Café
- c. Artisan Studio
 1. Plans to expand to four buildings.

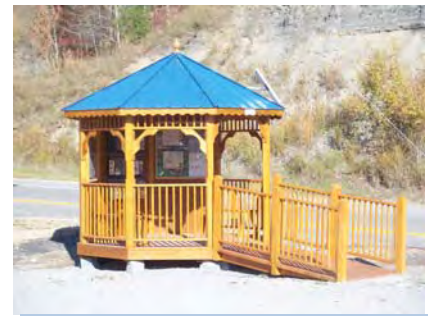
Issues: Parking

Needs and Potential:

1. Develop a history museum and hands on kids hands-on exploration zone.
 - a. Focus on the number of people who have had a positive impact on county.
2. Improve exterior of high school gym and develop.
3. Capitalize on both arts and music.
4. Parking.

Overview of a Few Priority Projects Already Being Implemented

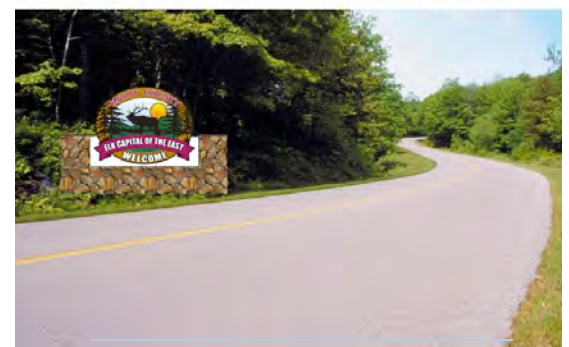
Many of the recommendations listed below that came out in the Tourism Commission meeting are now being implemented. For example, three site locations within the county have been identified as excellent locations for elk viewing; a hospitality training course is now being offered in the county; Alice Lloyd College is also offering courses in entrepreneurship; and a special course is being offered in entrepreneurship through a flexi-grant awarded to the Knott County Tourism Commission.



A tourist information booth has been built and is strategically located at the intersection of Highways 80 & 160 at the entrance to Yoder's Bulk Food Market which draws many visitors from outside the county due to their reputation for delicious bake goods and other items.

County welcome signs have been designed and funding is now being raised to erect four of them at the primary entrances to the county along both Highway 80 and Highway 15. A tourist information kiosk has been built next door to Yoder's Bulk Food Store to provide information and maps to visitors coming into the area. Motorcycle routes have now been laid out and maps developed. Hwy 1098 up to Sutton Memorial Park and Elk View Drive has now been paved. And a tourism signage program has been submitted to the state for approval.

1. Elk viewing plan for countywide.
2. Motorcycle Trails to capitalize on windy roads.
 - a. Budweiser – Combs Custom Cycles
3. Entrepreneurship Program.
4. Hospitality Training.
5. Capitalize on Yoder's popularity.
6. Pave Hwy 1098 to Sutton Memorial Park.
7. Welcome signs at all four major entrances to county. (Hwy 80 and Hwy 15)
8. Welcome signs into each community.
9. Welcome Banners.
10. Need gazebo at 160/80 to direct visitors to all offerings throughout the county.
 - a. Yoder's has agreed to provide space next to them.
11. Tourism signage throughout county.



*Knott County Welcome Sign
Funding has been raised to place at least one of the signs along Highway 80 as one enters the county.*

COMMUNITY MEETINGS FOR PUBLIC INPUT

Community Public Meetings

A quick summary of meeting held at the Hindman Settlement School is provided below focusing on the [Hindman Community](#)

1. Lodging
 - a. Hotels, cabins, B&B's
2. Restaurants
 - a. Sit-down, family restaurants, steak house, a little atmosphere.
3. Transportation – Mass Transit
 - a. Shuttle system and volunteer tour guides.
 - b. Need familiarization tours not just for visitors but also for residents so they know what the county has to offer.
4. Downtown
 - a. Improved with bridge.
 - b. Need additional parking – Parking Structure.
 - c. Potential for Old High School.
 - d. Need to improve river access and make it more appealing.
 - i. Develop the river as an attraction.
 - ii. Capitalize on clean up and use.
 - iii. A study called the Community Development Plan for Knott County recommended building an amphitheater on the riverfront
 - e. The Community Development needs to be followed up on.
 - i. Immediate action: Need to review it and determine status of recommendations.
 - ii. There was funding set aside for both sidewalk and lighting in the downtown area.
 - f. Graystone Building – Clean-up.
 - g. Main Street Program.
 - h. Business Stimulus.
 - i. Need affordable housing – Affordable rental.
 - j. Mural downtown on buildings depicting many offerings throughout county.
5. Need a welcome center.
6. Need campground and RV Park.
7. Need countywide event.
8. Need to develop 1 to 2 day tours.
9. Better signage countywide.
 - a. Plan has been developed.

COMMUNITY MEETINGS FOR PUBLIC INPUT

A quick summary of meeting held at Alice Lloyd College is provided below focusing on the Pippa Passes area.

1. Alice Lloyd College offers:
 - a. Café
 - b. Historical tours
 - c. Performances
2. Need lodging, small hotel in the area and/or B&B's and cabins.
3. Elk tour potential – Thornsberry Branch area.
4. Music – Bunyon Fork
5. Need a welcome center so people will find out all the offerings throughout county.
 - a. Possibly use Green Thumb or Senior Volunteers.
6. Need campground and RV park within county.
7. Need shuttle service to take people on elk tours, historical tours, craft tours etc.
8. Potential area for trail development:
 - a. Knob area
 - b. ICG
 - c. Raven area
 - d. Hemp patch area
9. Hunting opportunities:
 - a. Grouse and quail.
10. Need hunting kennel – Entrepreneur opportunity
 - a. Fox, coon, etc.
11. Sporting Clays – Pound Mill – Reynolds property.
12. Old Hwy – excellent site for elk view station.
13. Connector to Fire Trail through Hollybush.
14. Need signage to let people know of the many offerings throughout county.

COMMUNITY MEETINGS FOR PUBLIC INPUT

A quick summary of meeting held at Carr Creek Lake Marina is provided below focusing on the [Carr Creek area](#).

1. Red Fox Resort – Status?
 - a. Proposed golf course and lodge to would complement Carr Creek State Park, an initiative that was considered strongly in the late 80's through early 90's.
2. Airport is proposed on the Knott/Letcher County line.
3. Need cabins, B&B's.
4. There is a home above the marina that might make an excellent B&B.
5. Pioneer Village has potential to be developed into a campground.
6. Potential for Carr Creek High School to be converted into lodging for visitors.
7. Carr Creek Lake
 - a. Marina – New owners have plans to:
 - i. Reopen the floating restaurant.
 - ii. Add more slips.
 - iii. Offer jet skis.
 - b. B each area – Need boat docking area on either side.
 - c. No ski area – Safety issue.
8. Bird watching areas need to be added throughout county.
9. Carbon Glow near Letcher:
 - a. Great place for wildlife viewing and horseback riding.
10. South Fork offers both elk viewing but primarily horses.
 - a. Similar area near the lakes could be set up for both.
 - b. Pigman Bottoms near Pinetop.
11. Mules now owned by the county could be used to offer wagon rides at special events.
12. Horse Back riding opportunities
 - a. Campgrounds at Littcarr park area.
 - b. Shingle Branch and other horse trails – Mapped trails - Assistance from Bernice.
13. Fish & Game group – Shooting range etc.
14. Archery opportunities.
15. Potential sites throughout the county for publicly accessible ATV trails and trailheads.
16. Beaver Dam area – Consol – potential for additional campgrounds.
17. Group lodging is needed.
18. Need horse stable and a place to rent horses.
19. Need a trolley or van to take people to different sites around county.

COMMUNITY MEETINGS FOR PUBLIC INPUT

A summary of public comments made at the meeting held at the Mall Restaurant is provided below focusing on the [Mallie area](#).

1. Need interpretive signs.
 - a. Burgey's Creek – excellent site for birding
2. Bicycle Route:
 - a. Carrie Post Office serves as a safe haven.
 - b. Need to expand on this.
3. Motorcycles very popular. Connection with NASCAR and Petty racing
 - a. Motorcycle club – Follow up needed on this to find out more.
 - i. Ricky McDaniel, P.O. Box 394, Littcarr 41834
4. Vicco Bass Tournament at Carr Creek Lake.
5. Need a hotel and other lodging in the county.
6. Red Fox Development was discussed.
7. Proposed Knott/Letcher County Regional Airport – behind old airport near Isom.
8. Establish a festival that sets Knott County apart from all others.
 - a. Perry County has the Black/Gold Festival which includes marching band competition – Pauletta Smith band director
 - b. Knott County should capitalize on being the “Elk Capital of the East”.
 - c. Develop everything centered around elk.
 - d. One suggestion would be to rename Gingerbread Festival to Knott County Elk Festival.
 - i. Include 1k calf run
 - ii. Elk Run
9. Amphitheater
 - a. Was supposed to be located near the Human Service Center.
 - i. Parking is an issue and a concern.
 - b. CDI report recommended an amphitheater designed on Troublesome Creek as part of flood control.
 - i. Develop a play from James Still book “River of Earth”.
10. Truck Familiarization program – trucker buddies & school groups.
 - a. Pen pal, trucker buddies, website
11. Develop a strong bluegrass festival.
 - a. Leslie County has a very successful festival.
 - b. Vince Comb establishing one at Sutton Memorial Park.

COMMUNITY MEETINGS FOR PUBLIC INPUT

A summary of the public comments made at meeting held at Beckham Combs Community Center on the [Vest Community](#).

1. Hwy 160 to Vest needs to be addressed.
 - a. Three miles of narrow curvy road, 3-way stop and one lane bridge.
2. Problem with beavers in Ball Creek.
 - a. Starting at bridge they are stopping up culverts with potential for flooding issues.
3. Plan for community center to start an incubator program.
 - a. Working with ARC to get grant for kitchen – Use for cooking and canning classes.
 - b. Sustainable foods
 - c. Develop “pizza” farms on ½ to 1 acre plots.
 - d. Develop bottom field into community gardens
 - i. Help people to grow their own food - Share garden plots.
 - ii. Working with UK for seed program and farmers market.
 - e. Need air conditioner for community center especially for incubator program.
 - f. Could also convert school into B&B or assisted living apartments “with help from county” or an elder hostel.
4. Develop eco-friendly tourism:
 - a. Go “Green” including electric ATV’s for quieter machines that don’t scare elk.
 - b. Harvest and Planting Festivals.
5. Potential festival possibilities – BBQ, Bluegrass, Corn-on-Cob festivals, living history days.
6. Craft trail in Vest community – There are many crafters and artisans in the area including a gifted basket maker who need to be included on the trail.
7. Need a museum for this area – Not Pat’s house.
 - a. Small museum within community center or a larger one representing entire county.
 - i. Centralized verses community-based.
 - ii. Moonshine still and bootlegging history in the area.
 - b. Carl Perkins home was donated to college for a museum during the development of the Community Development Plan (CDI) in the 80’s.
8. Amphitheater and concerts.
9. Need to continue community clean-up program.
10. Sutton Development adjoins several other large land owners.
 - a. Land use
 - b. Forestry Stewardship Program & Corps of Engineers watershed management
 - c. Federal and state as well as community land use committee
 - d. Multi-use land plots for stewardship for ecotourism/agriculture, horse trails, hunting etc. - Issues: Poaching, misuse, land theft
11. Establish chapters of Knott County Land Use Committee in each portion of the county.
12. Look at Berea for example of a sustainable community.
13. ATV Center – Addressed in ATV deaths.

COMMUNITY MEETINGS FOR PUBLIC INPUT

A summary of public comments made at meeting held at Carrie Community Center is provided below focusing on the [Carrie Community](#).

1. Lodging and restaurants are needed.
 - a. Other than trail rides and ATV's – What are some other sustaining draws for lodging and hotels?
2. Need parking in Hindman.
 - a. Recommend a parking structure.
3. Develop antique business to compliment crafts downtown.
4. ATV trails:
 - a. Ride from here (Mill Creek) to Letcher, Perry and back to Knott.
 - b. Thomas Reynolds knowledgeable of ATV trails in Carrie area.
5. Pioneer Village – Development potential for using buildings for crafters and lodging in cabins.
6. Red Fox Resort – Land and road to proposed golf course. Check on status of ownership and potential for development possibilities.
7. Need to open up back side of lake for hiking, biking and camping.
8. Need another countywide clean-up and emphasis on keeping garbage picked up afterwards.
 - a. If areas were cleaned up, people might help to keep them clean.
 - b. Litter problem – PRIDE does a good job but hollows are in bad shape. Need major clean-up. Need big one-time operation to clean.
9. Need to clean up Troublesome Creek.
 - a. Could be an asset but currently more of an overgrown eyesore.
 - b. Need to have areas cleaned up to creek is more visible and accessible.
 - c. Federal dollars available for cleanup of creek.
 - i. Could come under guise of FEMA – as flood control issue.
 1. Take care of underbrush and sediment.
 2. Not everyone wants a rock wall built along their portion of the creek which is what has been done in the past to address flood issues.
 - ii. Twice Knott County received funding to dredge creek and very little was accomplished except in the Hindman area.
 - iii. Need to come up with a plan and everyone contact their state reps and congressmen to request work be done.
10. Need van at Sportsplex for tours.
 - a. Possibility of using the vans from LKLP.
 - b. LKLP is unable to do it as an agency but there may be a possibility of a private entrepreneur or organization starting a tour guide service. (Van, fuel, insurance).
 - c. Public service transportation.
11. Camp Nathanael – Open since the 30's.
 - a. Operates from late February through late November.

COMMUNITY MEETINGS FOR PUBLIC INPUT

- b. Always open for people to visit but prefer them to call ahead for guided tours.
 - c. Possible attractions to visit:
 - i. Chapel – Hand quarried and stain glass windows from DC.
 - ii. Swinging bridges.
 - iii. Could incorporate into a “tourist stop” and elk view station.
12. Need billboards and signage to promote what the county has to offer.

COMMUNITY MEETINGS FOR PUBLIC INPUT

A summary of public comments made at meeting held at the Jones Fork Fire Department is provided below focusing on the [Mousie Community](#)

1. Need Hotel – build near Sportsplex.
2. Need good restaurants.
3. Discussed sewage treatment plant and need for it to come to Mousie/Jones Fork Community.
4. ATV's:
 - a. Go up Bear Branch to strip job – More 4 wheelers than cars.
 - b. Can ride from Dismal/Pippa Passes/Hollybush/Martin Branch all the way to Virginia.
5. Is county or state pushing tourism? – Will they help market it?
6. Elk guide – Jerry Hall has already had calls from Alabama and Western KY for this year.
7. Cabins:
 - a. Interest in building cabins if the county will help to advertise them.
 - b. Several have plans to build cabins on their property but are trying to work out getting water and sewer to the sites at some point.
 - i. One person has a brother renting cabins in Ohio for \$359 per weekend with very little to offer other than bird watching and quiet area.
 - ii. Hunters need places to stay as do families.
8. Need to build nice lodging – not shacks. Locate in strategic locations throughout county.
 - a. Do not want to be in worn out trailers or areas badly kept. Want the county to establish themselves as a quality place to visit – Attract high end clientel that have money to spend.
 - b. One proposed site runs into Caney area.
 - c. Another potential area includes 150 acres where one can drive a car into it.
 - i. Awesome view – “See all the way to Dollywood”.
 - d. Carl Gibson and others have approximately 1,000 acres to develop and is very interested in developing cabins on their property.
9. Need campgrounds.
 - a. Potential to use both Caney and Beckham Combs Elementary schools which already have water and sewer and could accommodate 30 campsites or more.
 - i. Backhoe in one week could have it done.
10. County needs to develop a website.
11. Need to work with PRIDE and CEDARinc.org.
12. Need to educate people in the area with land to open it up to hunting.
 - a. Concern about county trail ride taking place during hunting season.
 - b. Concern that deer hunting season is during rutting season.

COMMUNITY MEETINGS FOR PUBLIC INPUT

13. Crafters in area and potential of developing a crafts trail.
 - a. Ode Gibson in Pinetop area makes rocking chairs with bark bottoms.
14. Many people in the Mousie area love to ride horses and that during the county trail ride, this part of the county is a ghost town.

Campgrounds and Cabins

Add a variety of lodging in strategic locations throughout the county.

Lodging was the number one need mentioned in nearly every strategic planning meeting throughout the county. As noted in the overview of recommendations, Chestnut Mountain Development located off Hwy 80 and in close proximity to the Knott County Sportsplex was the most logical location for a hotel (See APPENDIX V for more on Chestnut Mountain). The development of bed & breakfasts, cabins and campgrounds throughout the county was also considered a priority. Depending on where each are located, potential clientele could include families, hunters, bikers, horseback riders, wildlife enthusiasts and boaters. As noted earlier, “all seemed to agree that whatever was built, it should be built well. No one wanted to see shacks or used worn out trailers. Knott Countians desire to become a ‘premier quality location to vacation’.”

Four proposed sites for campgrounds and other lodging include:

1. A campground near Red Fox Community Park,
2. Potential campground and additional lodging in existing cabins at Pioneer Village,
3. A horse camp near Littcarr Recreation Area,
4. RV Park at Knob Bottom.

Additional campgrounds and possible cabins in the Jones Fork and Burgey’s Creek areas are being considered. The county has also signed an agreement with landowners for ½ acre of property near the intersection of Hwy 582 and Hwy 7 near Puncheon and Joe King Branch to develop an ATV Trailhead for the ATV Fire Trail #2 (See Trail Development). Private landowners are considering building cabins and expanded parking area to hold special events.

CAMPGROUND NEAR RED FOX COMMUNITY PARK



During the research phase for developing the strategic plan, it was discovered that in 1996, the Knott County Fiscal Court had entered into a long term agreement with the U.S. Corps of Engineers to develop a community park across from Pioneer Village on the south side of Hwy 15 close to the Letcher County/Knott County line. The Red Fox Community Park built in 1997 includes a playground, basketball courts and walking track was built in the late 90’s.

The site also includes an asphalt road along the entire length of the property (Old Hwy 15) which ends at the water’s edge of Carr Creek Lake and the front portion of the property is often used for parking for ATV riders accessing the Red Fox ATV Trail System



Entrance from Hwy 15 could be used for ATV trailhead.



Old Hwy serves as primary road through proposed campsite.



Proposed Campsite ends at water’s edge w’ boat access to Carr Creek Lake.



Red Fox playground parking located nearby.

RECOMMENDATION #1 – Campgrounds & Cabins

RECOMMENDATION: Knott County should develop a campground at Red Fox along Old Hwy 15. POTENTIAL CABINS AND CAMPGROUND AT PIONEER VILLAGE

Years ago when Carr Creek Lake was made, a few of the existing log structures were moved to a location just east of the intersection of Hwy 160 and Hwy 15. Through the efforts of LKLP, an economic development organization, the land and buildings became part of Pioneer Village, a site for artisans and crafters to sell their work to the public. At its peak, over 70 artisans displayed and sold their artwork at the site. Although very popular with tour groups and visitors, the facility closed in 2005 due to lack of funding.

The site has both water and electricity and includes restroom facilities, a covered pavilion, large rock fireplace, plus a small two-stall log stable (not shown) and approximately 100 acres. There are also two cabins on-site.

One cabin offers a fireplace and air conditioning and could become lodging for visitors with very little work required. The second log cabin is a two story structure with two rooms on one side and two on the other separated by a dogtrot that includes a shared restroom on the lower floor. At some future time, kitchen facilities could be added to the lower rooms and turn the upper rooms into sleeping areas or all four rooms could become efficiency apartments for visitors.



Gate entering property



Restroom facilities



Covered picnic area



Stone fireplace



Interior view of a room



Four room log cabin



Dogtrot between structures



Existing one-room cabin

Its location just off Hwy 15 within just a few miles of Carr Creek Lake and in close proximity to miles of proposed equestrian trails and just across the road from the Red Fox ATV Trailhead make it an ideal location to develop. It is recommended that the county pursue the option to obtain Pioneer Village and open it up for lodging and to serve as a trailhead and campground for equestrian riders.

ACTION TAKEN: The LKLP organization has agreed to give the County Fiscal Court the Pioneer Village Property which they intend to develop into lodging for visitors, a campground and trailhead.

RECOMMENDATION #1 – Campgrounds & Cabins

The county is now looking into the option of developing a trail system across reclaimed coal lands in which trails already exist in order to connect this site to the proposed Littcarr Horse Camp.

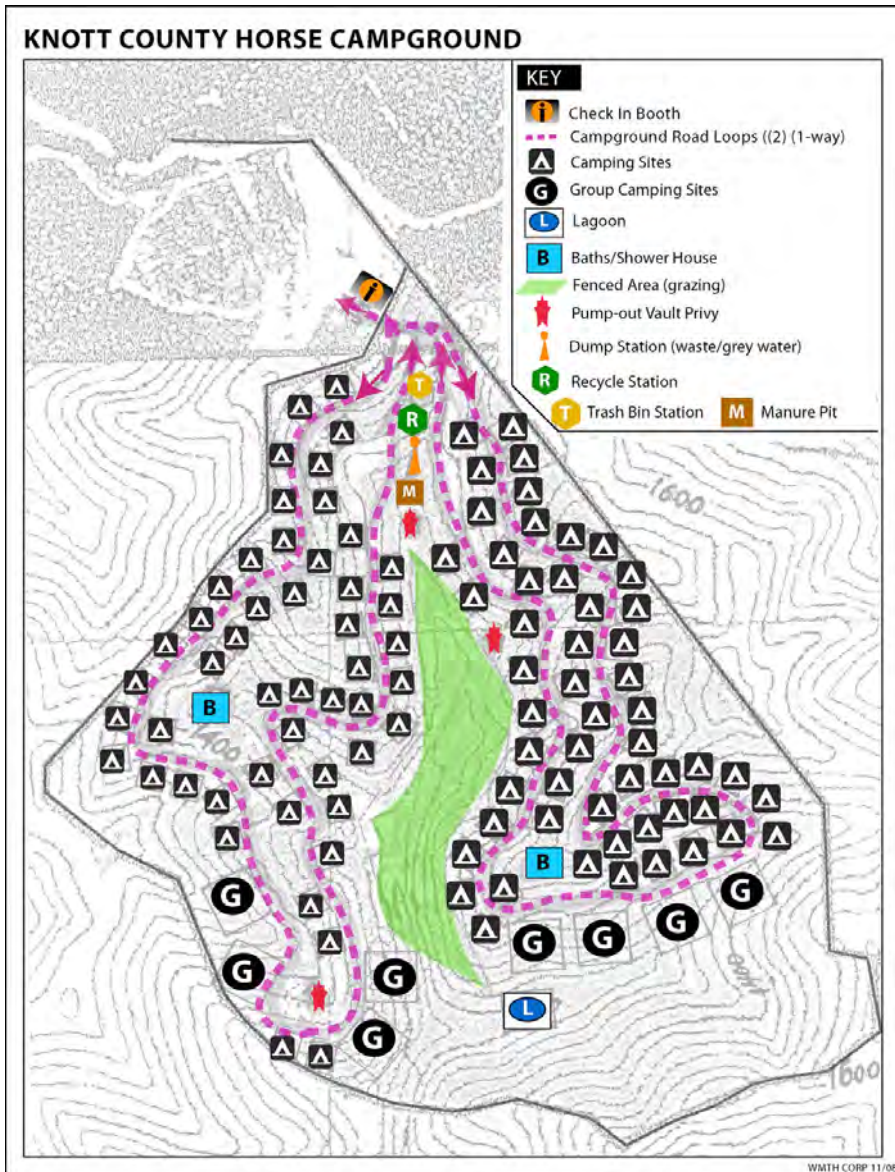
RV PARK AT KNOB BOTTOM NEXT DOOR TO THE ATV SAFETY TRAINING CENTER

The Knott County Fiscal Court has set funds aside to purchase property at Knob Bottom near the ATV Safety Training Center and Sutton Memorial Park. Once the contract has been signed for the purchase of the property, the county plans to build a RV Park and campground on a portion of the 250 acres.

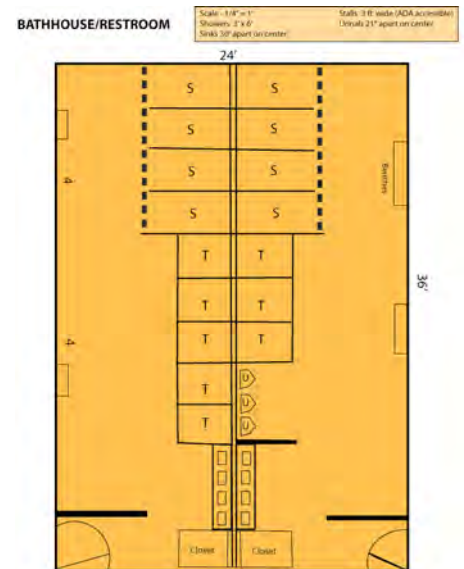
Phase I will include 40 to 50 campsites with full hook-ups, group camping area, shower house and restroom facility, dump station, and either a grazing area in the center or possibly move the new riding ring to the center of the property. The remainder of the property will be used for primitive camping and an ATV trailhead and trails. Below shows the campground fully developed with 100 individual campsites, 8 group campsites and two shower/restroom facilities. (See APPENDIX I for Campground Specifications).



Since the proposed campground at Knob Bottoms tends to be an area frequently used by both horse back and ATV riders, a number of the campsites should include pull-in areas at a minimum of 55' long to accommodate both car and trailer.



Concept Idea for combined Showerhouse and Restrooms*

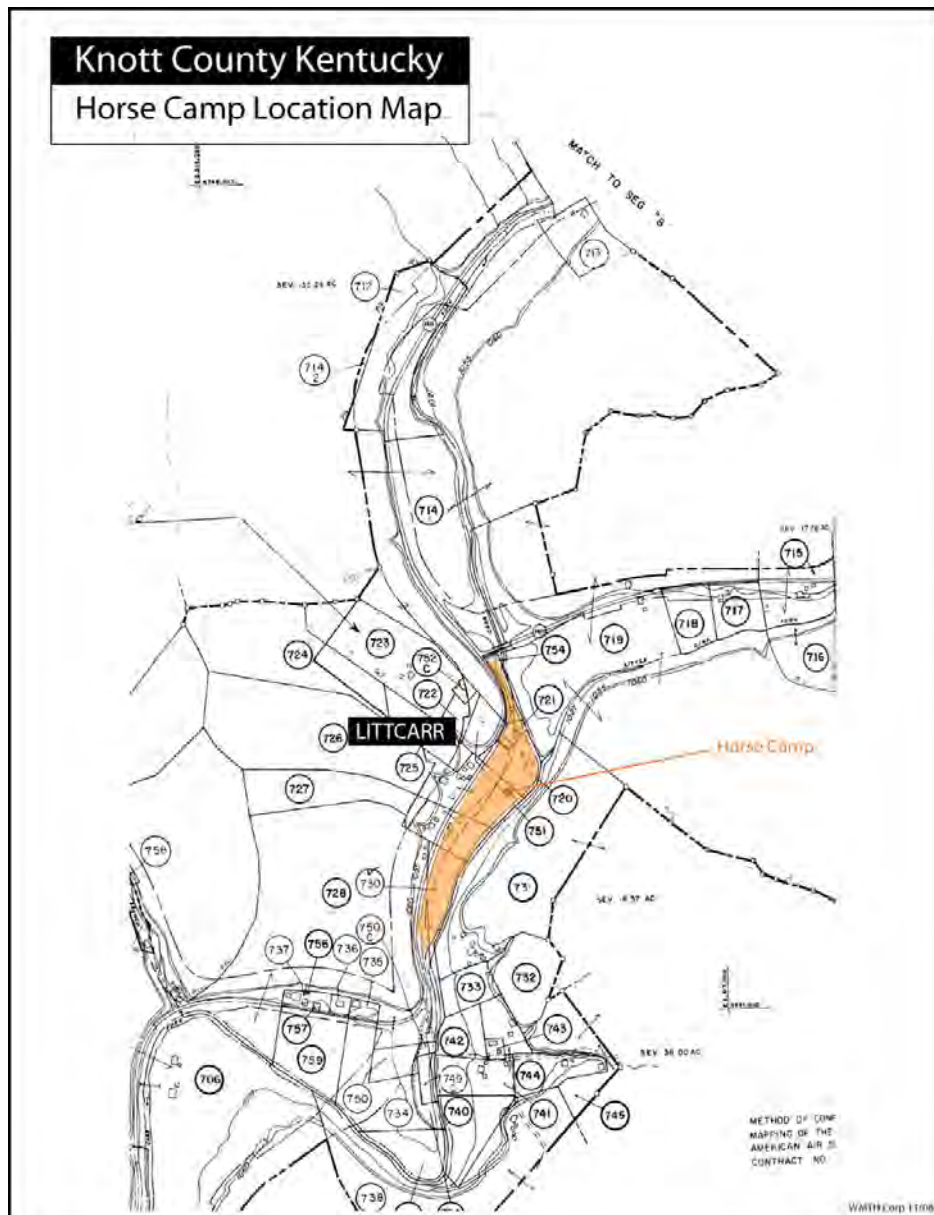


RECOMMENDATION #1 – Campgrounds & Cabins

POTENTIAL HORSE CAMP NEAR LITTCARR RECREATIONAL AREA

There are approximately 20 acres of U.S. Corps of Engineer's property located next to the Littcarr Campground near Carr Creek Lake which has the potential of being developed into a horse camp.

The U.S. Corps has agreed to form a long term lease with the county. They have also agreed to allow campers the use of both showers and restroom facilities at Littcarr rather than having to build these amenities on site. If the horse camp is developed, trails will lead from this site to both Pioneer Village and to the Shingle Branch trails that circle around the northern portion of Carr Creek Lake.

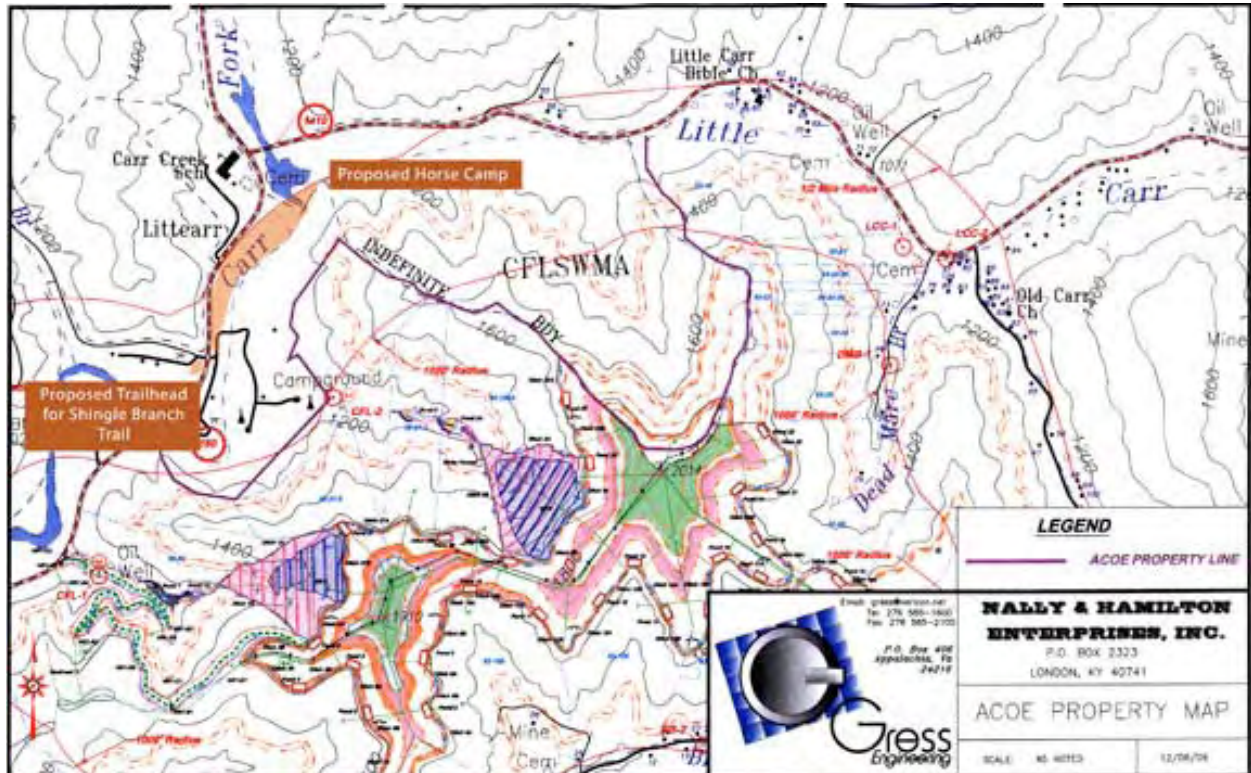


Restroom facilities and shower house at Littcarr campground are located in close proximity to the proposed site.

RECOMMENDATION #1 – Campgrounds & Cabins

MORE DETAILED MAP OF PROPOSED EQUESTRIAN CAMPSITE AND TRAILHEAD NEAR LITTCARR CAMPGROUND AND CARR CREEK LAKE

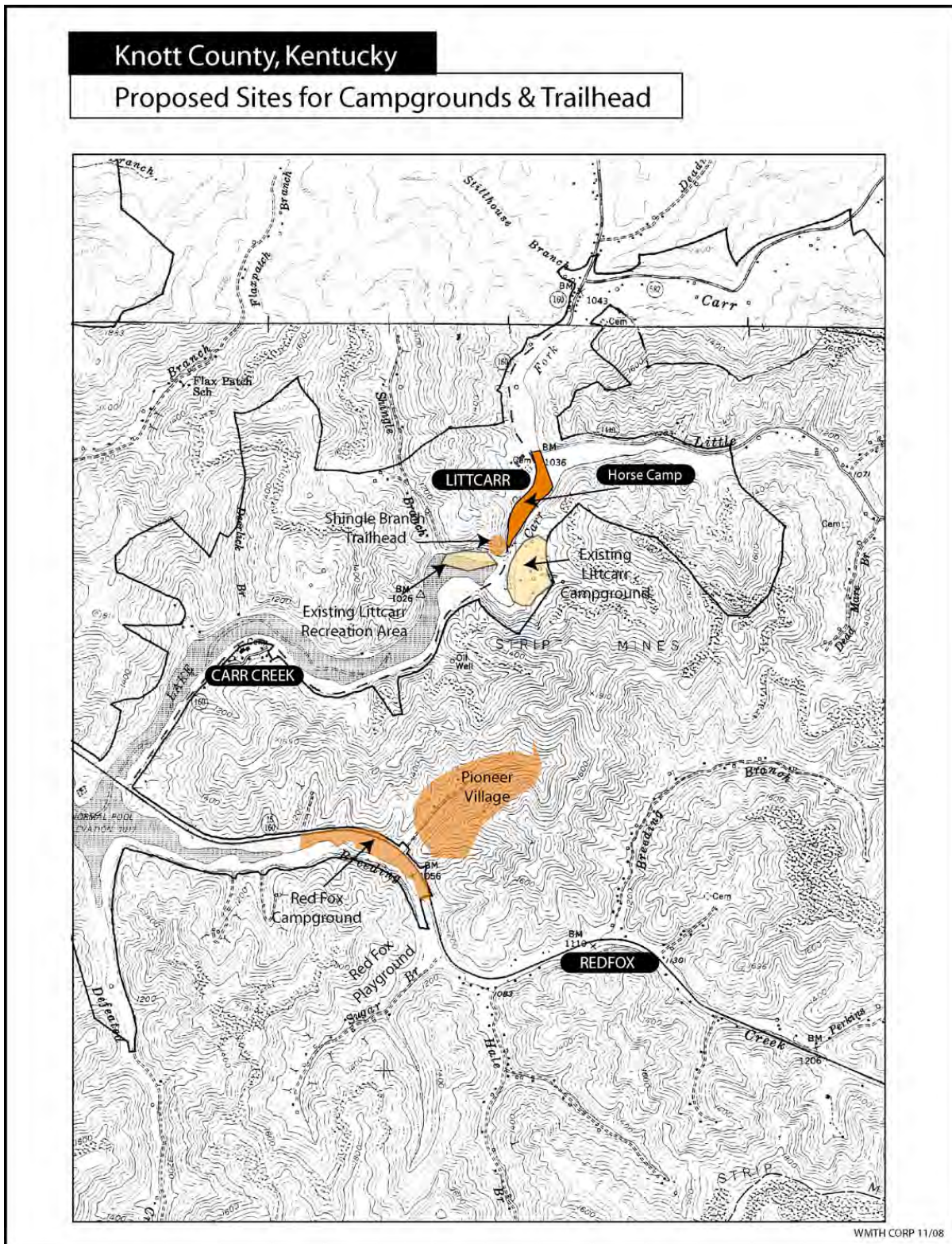
Below is a map showing both the proposed horse camp (strategically located near U.S. Corps of Engineers Littcarr Campground to allow shared use of shower houses and restrooms) and the proposed Shingle Branch trailhead located right off Hwy 160 in the southern quadrant of the county. Both the trailhead and horse camp are in close proximity to miles of equestrian trails on reclaimed coal properties east of the proposed campsite as an additional 6 miles of trails just north of Carr Creek Lake.



TWO CONCEPTS FOR STABLES
*One is designed for areas that are more shaded.
More information on stables can be found in APPENDIX II.*

RECOMMENDATION #1 – Campgrounds & Cabins

RECOMMENDATION: Campgrounds and lodging at Pioneer Village, Red Fox and a future horse camp near Littcarr are all being recommended.



RECOMMENDATION #1 – Campgrounds & Cabins

OTHER LODGING IS NEEDED THROUGHOUT KNOTT COUNTY

RECOMMENDATION: It is strongly recommended that the private sector be encouraged to build additional lodging in strategic locations throughout the county.

Below are a few examples of cabins. *Go to APPENDIX I for additional ideas and concepts.*



RECOMMENDATION #2 – Trail Development

Trails

Develop additional trails as part of the vision of establishing a “county-wide adventure tourism park system”.

As noted on the maps on pages 34 and 36, there are four different areas of the county developing horse trails and five developing ATV trails in Knott County. Only the ATV and horse trails in the northwest quadrant of the county have been GPS mapped, landowners identified and signage added.

GOAL #1: GPS map all existing trails in the county and identify ownership.

An ARC grant has been received by the Knott County Fiscal Court to map the trails, identify ownership and obtain permission from the property owners to open the trails for public use.

ACTION TAKEN:

- NEW ATV TRAIL DEVELOPMENT

Thus far, four ATV trails located in the southeast, east and northeast quadrants of the county have been mapped and property owners are now being identified.* These include the Red Fox ATV Trail in the southeast quadrant of the county (*which goes into both Letcher and Perry Counties*), the Fire Trail in the eastern quadrant (*which is being expanded into the Big Branch area of Letcher County*) and the Brushee Fork Trail in the northeast quadrant. All of the ATV Trails lead into other counties. Agreements will need to be made with these counties to allow this and possibly establish additional trailheads to the trails that enter from their counties. (See next page for overall map)



PROPOSED ATV TRAILS IN KNOTT COUNTY RECENTLY MAPPED



Red Fox ATV Trail 4 in S.E. quadrant leads into Perry & Letcher Counties



Fire ATV Trail #2 in East quadrant leads into Letcher County



Sutton's Elk View ATV Trail #1 in northwest quadrant leads into Breathitt County

PROPOSED HORSEBACK RIDING TRAILS RECENTLY MAPPED



Shingle Branch Horse Trails around Carr Creek Lake near Litt Carr



Jones Fork Horse Trails near Mousie will eventually lead into Floyd County

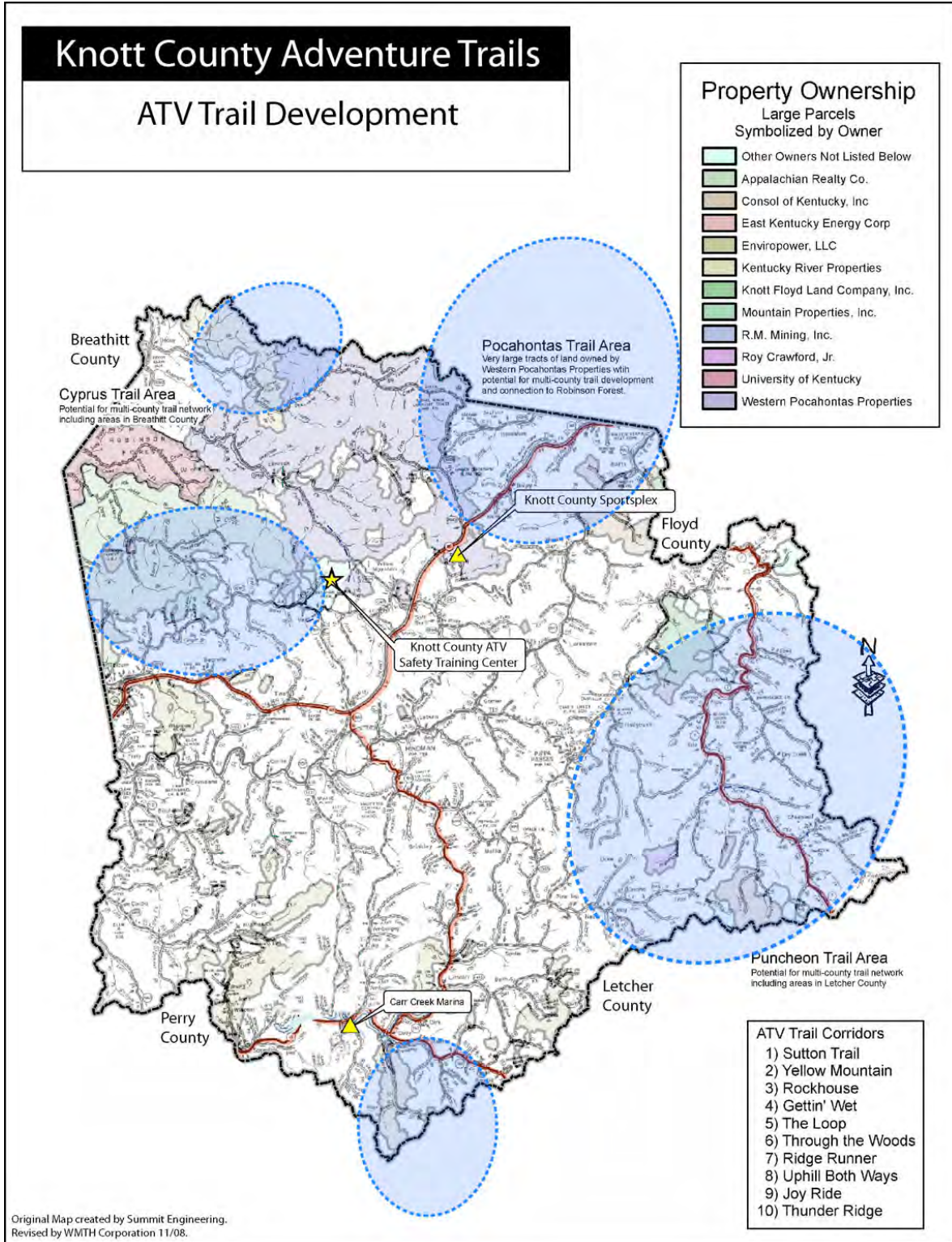


Additional horse trail developed on Western Pocahontas property.

**Please Note: Detailed maps and information on all of the above trails are available upon request and will be included in a final report on trail development in Knott County which will be available in January 2009.*

RECOMMENDATION #2 – Trail Development

ATV TRAIL DEVELOPMENT: Trails in the sections of the county highlighted in blue are now being mapped and property owners identified to determine willingness to open the trails for public use. Best site locations for trailheads, camping, and basic infrastructure such as water and restroom facilities are also being considered.



RECOMMENDATION #2 – Trail Development

EXISTING HORSE TRAILS:

There are three horse trails in Knott County that have been developed, GPS mapped, and signage added. They are located on Western Pocahontas property in the northwest quadrant of the county using the Sutton Memorial Park near the Knott County ATV Training Center as the trailhead. These trails are currently being used for both the Spring and Fall Knott County-sponsored Trail Rides held annually.

This year's Fall Trail Ride attracted over 4,000 riders and 2,500 horses.



A few photos from annual Knott County Trail Ride that attracts thousands of riders to southeast Kentucky.

• NEW HORSE TRAILS AND PROPOSED HORSE CAMPS:

1. An additional horse trail has also been added to the three existing trails developed on Western Pocahontas property in the northwest quadrant of the county near Sutton Memorial Park. The goal is to develop additional trails in this area which will eventually connect to trails being developed in South Fork area of Breathitt County.
2. There have also been two horse trails mapped in the south central and southwest quadrants of the county.
 - o One proposed six mile trail called the Shingle Branch Trail is located near Carr Creek Lake primarily on Corps property. The trailhead is at the entrance to U.S. Army Corps of Engineer's Littcarr Recreational Area. Easy access, ample parking plus overflow parking and restroom facilities within 200 yards of the trailhead make this site ideal.



Gated trail entrance



Ample parking and easy access



Overflow parking, restroom facilities & playground nearby

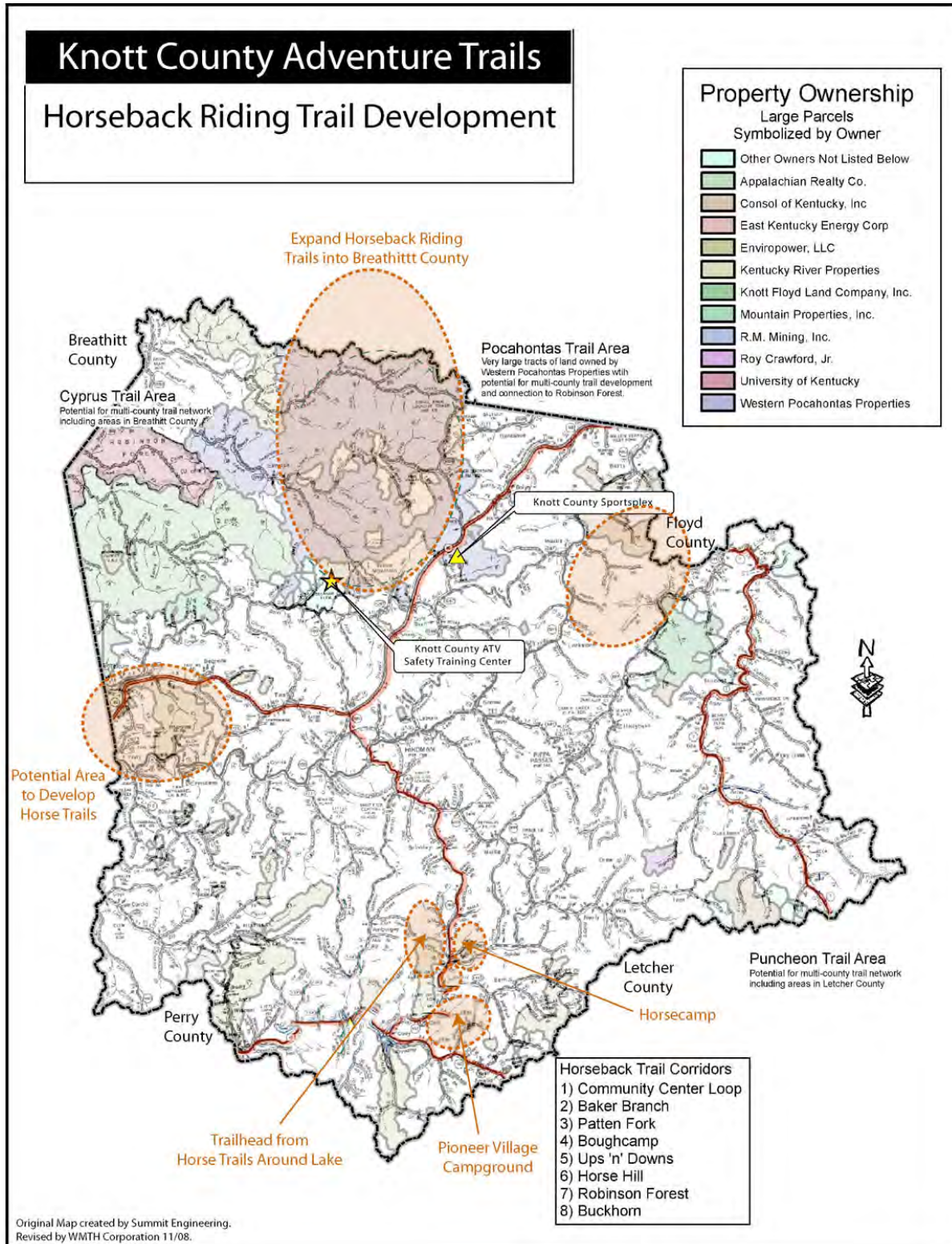
- o The other trail encompasses Martin Branch, Dismal Branch, Pine Tree Hollow and Thornsberry near Mousie and may eventually be extended to include Bear Branch and the Triplett area into Floyd County.



Carl Gibbery, one of the property owners, is providing assistance in mapping the trails and identifying other land owners on this reclaimed coal site.

RECOMMENDATION #2 – Trail Development

HORSE TRAILS: The map below highlights locations in Knott County where horse trails, trailheads and/or horse camps are proposed. Trails are currently being developed and property owners identified to determine willingness to open their land to the public.

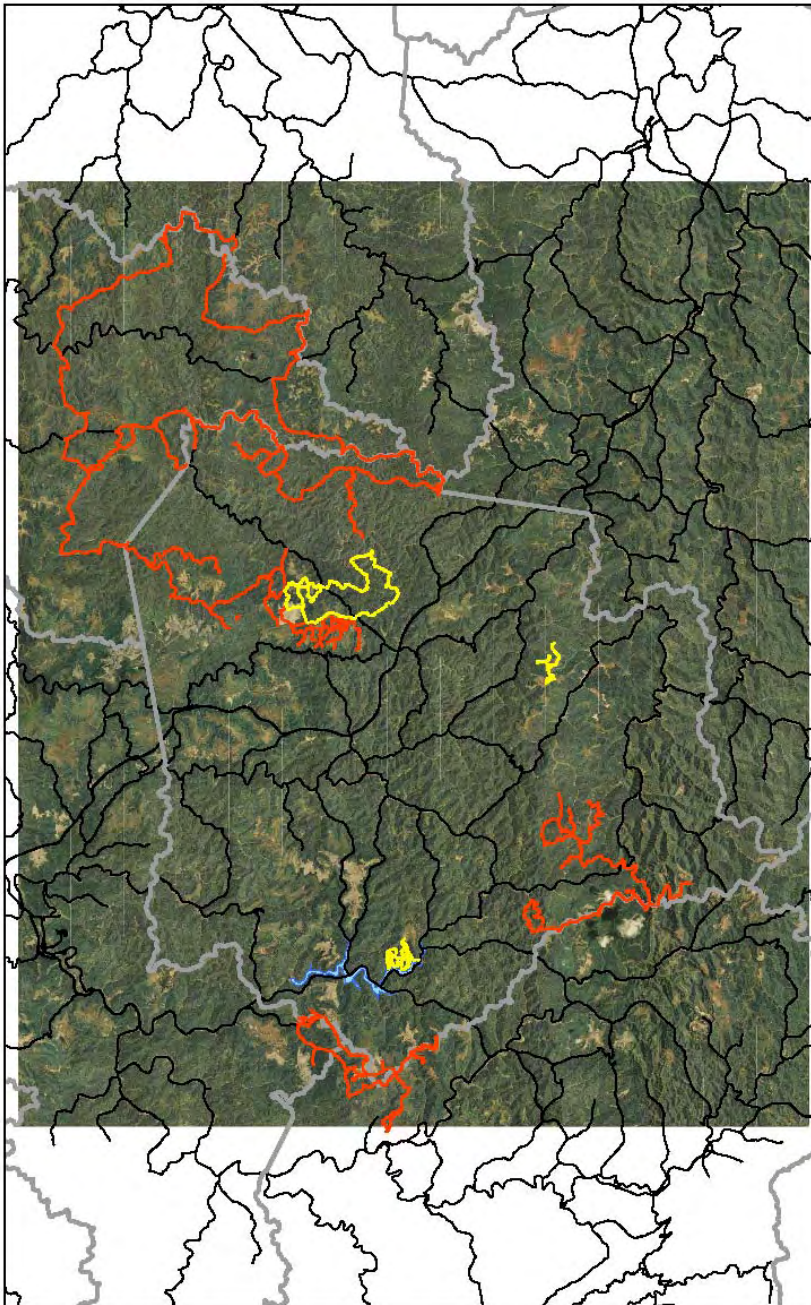


RECOMMENDATION #2 – Trail Development

KNOTT COUNTY OVERALL TRAIL MAP:

Below is a map of Knott County which displays the location of each of the trails being developed within the county.

Horseback riding trails are featured in **yellow** and ATV trails are in **red**.



Trails* noted on the map include:

- Red Fox ATV Trail #4 in S.E. quadrant leads into Perry & Letcher Counties.
- Fire ATV Trail #2 in East quadrant leads into Letcher County.
- Sutton's Elk View ATV Trail #1 in northwest quadrant leads into Breathitt County.
- Shingle Branch Horse Trails around Carr Creek Lake near Litt Carr.
- Jones Fork Horse Trails near Mousie will eventually lead into Floyd County.
- Additional horse trails developed on Western Pocahontas property in the northwest quadrant of the county.

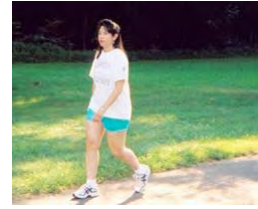
**Details on trails available upon request.*

RECOMMENDATION #3 – Walking and Bicycle Trail

Reaching More Trail Users

Add a 3 mile pedestrian/bike trail connecting Sutton Memorial Park to Elk View Drive

In the northern portion of the county, it is recommended that a 3 mile 5' to 7' wide pedestrian/bike trail be constructed connecting the Sutton Memorial Park* to the Elk View Station at Elk View Drive. Interpretive signs will be added along the route and at the Elk View Station itself.



This particular trail will serve two purposes: It will provide a trail within the county specifically dedicated for those who enjoy biking and/or walking. The trail will follow along the ridge of one of the primary elk viewing areas in the state.

At one end of the proposed trail is Sutton Memorial Park where the Knott County ATV and Street Bike Safety Training Center is located. The site also serves as the trailhead for over 100 miles of both ATV and equestrian trails. On the other end of the trail is Elk View Station where one can stand on one of the highest points in the area to look for elk.



ATV Safety Training Center serves as a trailhead at Sutton Memorial Park



Judge Thompson and two tourists on top of Elk View Station



As many as 300 elk have been seen in this area

Interpretive signs placed strategically along the entire route will not only provide information on elk but also include maps of the other trails within the area and provide the public with a better understanding of other animals found in the region and the role coal reclamation has played in the development of both the trails and the view shed.



Directly across from Elk View Station is land owned by International Coal Group (ICG). The Knott Co. Fiscal Court is under negotiations with ICG to obtain a long term lease to use this area for parking.

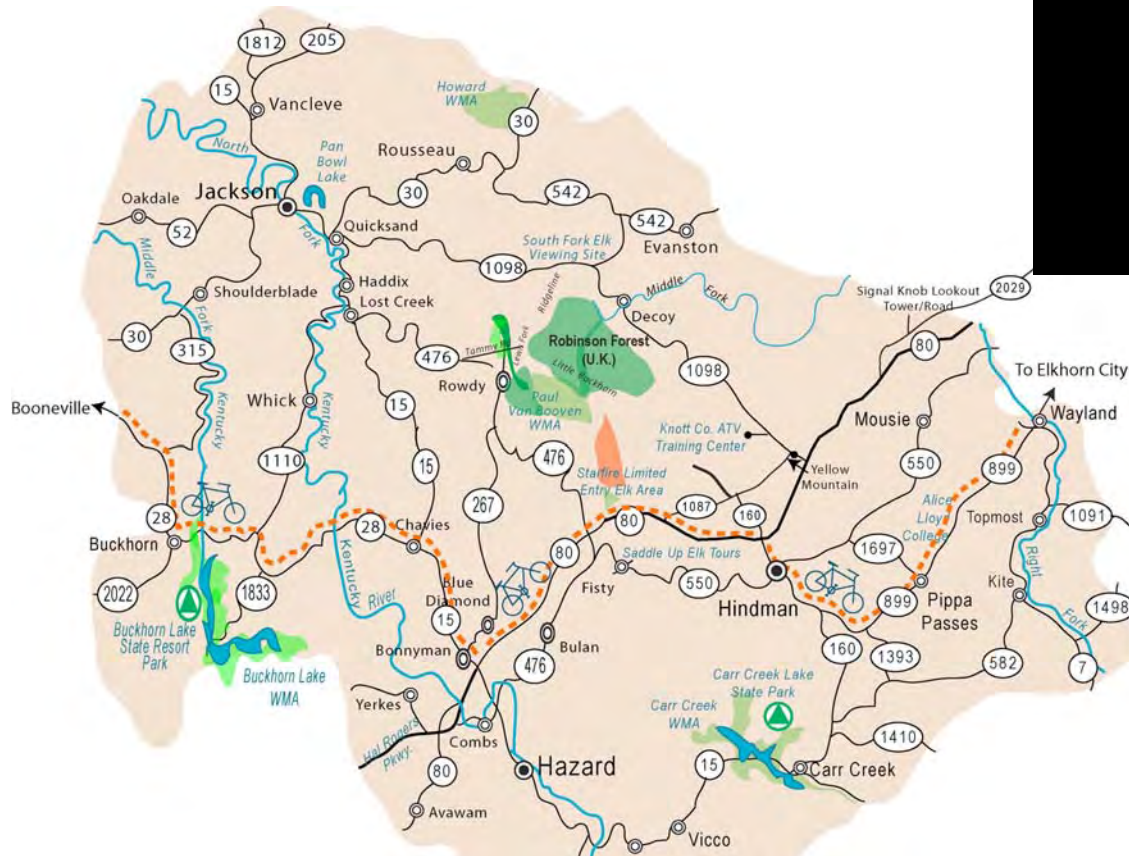
The site will include an ADA approved port-a-john and interpretive wayside exhibits about elk and other wildlife, reclaimed coal lands and other trails within the region. This parking area will be used by both motor vehicles and horses as well as those who wish to park and walk/ride.

RECOMMENDATION #4 – Bicycle Tour Routes

Bicycle Tour Routes

Encourage bicyclists to come to Knott County

The TransAmerica Bicycle Route across the United States established in 1976 travels eastward out of Owsley County along Highway 28 across Breathitt County then turning south towards Buckhorn through Perry County following Highway 15 then east on Highway 80 into Knott County. The route is clearly marked on all state maps and takes one through Booneville, past Morris Fork Crafts, then through Buckhorn and Chavies, past the Artisan Center in Hindman and Alice Lloyd College, taking the rider eventually through Elkhorn City and into Virginia.



The TransAmerica Trail was established for Adventure Cycling's celebration of the U.S. bicentennial in 1976. At that time, the organization was called Bikecentennial, a name many old-timers still associate with the TransAm Trail. This is still the greatest and most used route crossing America.

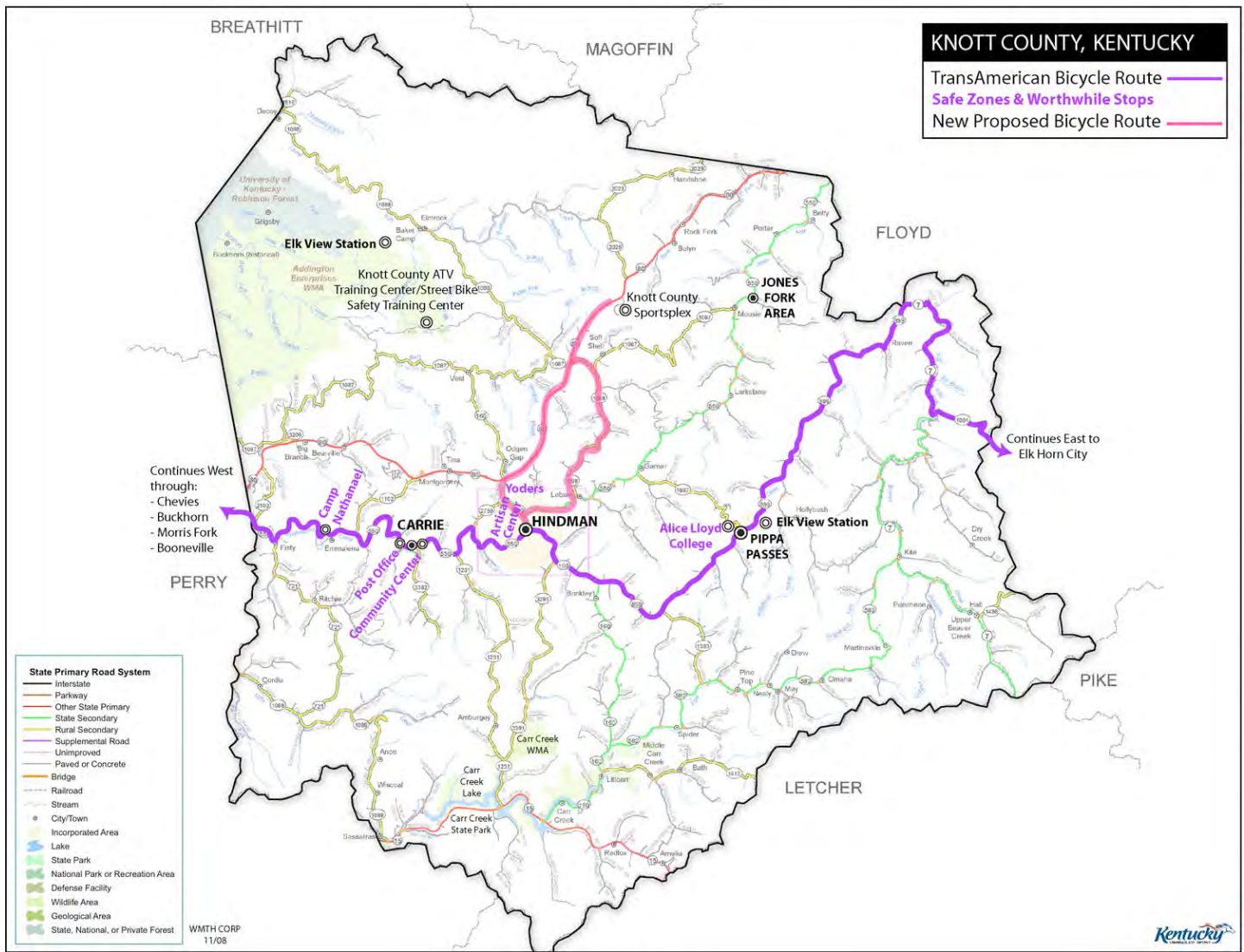
The TransAmerica Bike Route across the United States is divided into twelve sections. Hindman is part of section 11 that travels 381 miles from Berea KY to Christiansburg VA.

RECOMMENDATION #4 – Bicycle Tour Routes

ACTION TO TAKE: Knott County needs to capitalize on the fact that the TransAmerica Bicycle Route* goes through their county by providing markers along the existing route, and developing brochures highlighting worthwhile stops along the way such as the Artisan Center and Alice Lloyd College, two locations many bicyclists are already stopping at each week.

- Bike clubs should be notified and additional routes developed on roads within the county that either have limited traffic and fairly smooth surfaces or have wide shoulders in which a bicyclist may travel safely. One such route is along Hwy 80 from the Sportsplex, turning at Hwy 160 with a stop at Yoders then south into the City of Hindman with a stop at the Artisan Center for a bite to eat at the Artisan Café. One could then travel along 550 to Leburn and take Hwy 1098 back to Hwy 80 and head back to the Sportsplex. (See following page for maps and details to submit to State when requesting signage)

MAP OF EXISTING AND PROPOSED BICYCLE ROUTES THROUGH KNOTT COUNTY



*A map and additional information on the TransAmerica Bicycle Route is provided at the end of this section.

RECOMMENDATION #4 – Bicycle Tour Routes

REQUEST FOR AN ADDITIONAL STATE-RECOGNIZED BIKE ROUTE THROUGH KNOTT COUNTY

A very worthwhile bike trip would be to start at the Knott County Sportsplex, go 6 miles west on Hwy 80 (6' to 8 foot shoulders on both sides of the road make an excellent bike route).



Both Spring and Fall are breathtaking along Hwy 80 with hundreds of redbud lining the road (through a Hal Roger's initiative) and beautiful fall foliage.

Continue west to mile marker 8 then turn left onto Hwy 160. Be sure to stop at the Tourism Commission Kiosk and Yoder's Bulk Food Store where one will find delicious homemade bread, other bakery items, and more.



Tourism Commission's Information Kiosk and Yoder's Bulk Food Store – two worthwhile stops.

Continue South on 160 then right onto Hwy 550 finds one in downtown Hindman. The Artisan Center is a must stop and has an excellent café. Just down the street a block, one can see artisans at work.



*Artisan Center and Artisan's at work are two worthwhile stops.
A side trip along Hwy 160 is the Marie Stewart Museum & Gift Shop.*

RECOMMENDATION #4 – Bicycle Tour Routes

Leaving the Artisan Center, head east on 550, turning left at Leburn onto Hwy 1087/1098, a very scenic road offering little if any shoulder but a very scenic road with very light traffic.



At this point, turn right and head east on Hwy 80 back to the Knott County Sportsplex. The entire trip is approximately 18 miles.



A community park just before getting back on Highway 80 makes a nice stop.



Very wide shoulders on both sides of Hwy 80 make excellent bike routes.

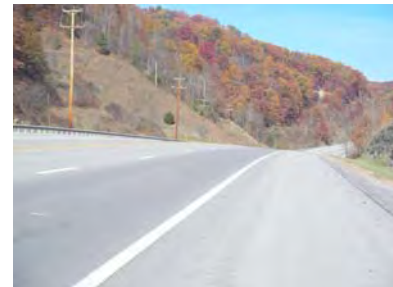
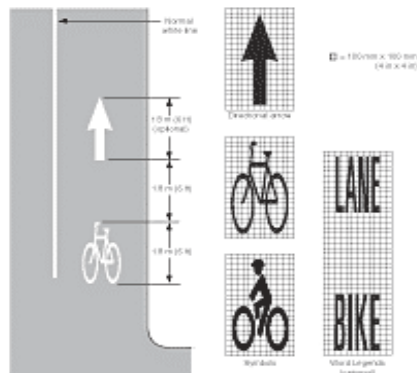


Figure 9C-4. Example of Optional Word and Symbol Pavement Markings for Bicycle Lanes



Symbols painted on bike route



Road Signage

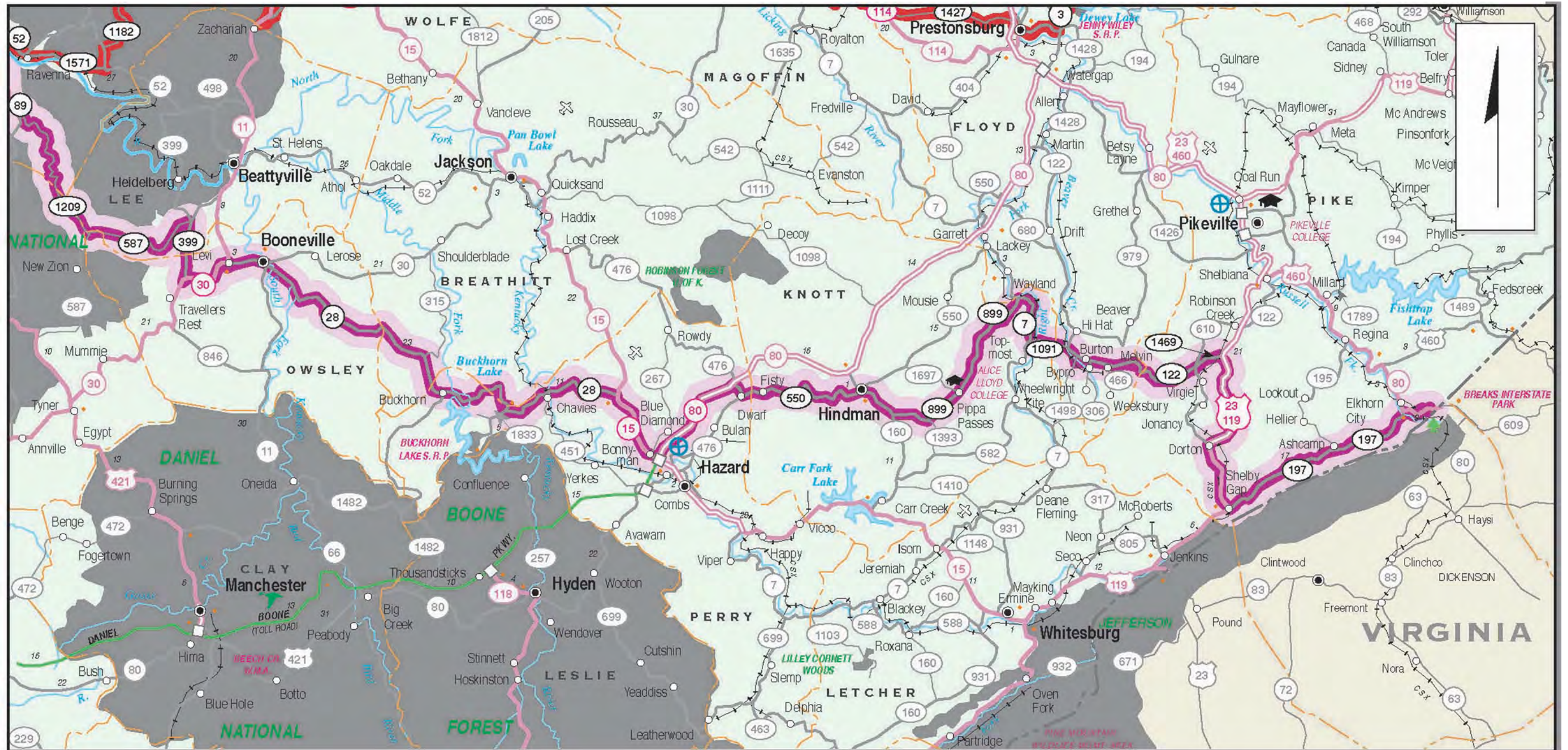
ACTION TO TAKE: Submit a proposal to the Kentucky Department of Transportation Multi-modal Program to include this route and request street signs and, where feasible, painted signage on the road (as shown above).

Two groups to notify about bicycling routes through Knott County include:

- Adventure Cycling Association is part of an initiative to develop a national bike route system called the U.S. Bicycle Route System (USBRS).
<http://www.adventurecycling.org/routes/nbrn/us bikeways system.cfm>
- <http://www.pedaling.com/>

TRANSAMERICAN BICYCLE ROUTE ACROSS AMERICA

is divided into sections. Section 11 goes from Berea, Kentucky to Christiansburg, Virginia. Below is the recommended stops from Booneville to Elkhorn City, Kentucky.



In **BOONEVILLE**, the church site is always open.

- Westbound narrative should read ... *13(21) Booneville. Turn right onto Mulberry St/SR 11/30. In one block, turn left onto N. Court St. In one block, turn left onto Main St., then in one block turn right onto S. Court St./SR 11/30 ... (4/06).

In **PIPPY PASSES**, the Pippa Passes Home Hostel has limited space in the hostel, but offers camping as well. (12/05)

In **ELKHORN CITY**, John W. Moore's Motel is located at 493 Patty Loveless Drive. (11/05)

RECOMMENDATION: Knott County Tourism Commission needs to contact the Routes & Mapping Department, Adventure Cycling, 150 East Pine, Missoula, MT 59802 or email routes-maps@adventurecycling.org and add additional stops along the route.

A few suggested stops include Camp Nathanael, Carrie Community Center, Appalachian Artisan Center & Cafe and Alice Lloyd College. A number of stores & dining opportunities are available at Holly Hills Mall.

Motorcycle Tour Routes

Encourage motorcyclist to come to Knott County

There are many wonderful windy and scenic roads through the mountains of southeast Kentucky. Motorcyclists love these types of roads. To this end, Knott County recently opened a street bike safety training course at Sutton Memorial Park in the northeast quadrant of the county. They are encouraging people to come to Knott County for motorcycle safety certification. (See APPENDIX III for more on the Street Bike Safety Center). It would be highly recommended that Knott County also develop and market motorcycle routes through their county for people to “test their safety skills they have learned” while enjoying the scenic roads.

A few of the routes include:

- Taking Hwy 550 through Fisty and Carrie with a recommended stop in Hindman for a tour of the Artisan Center and lunch at the Artisan Café. Continue east where one may wish to stop for pizza or a full meal at the BP Station in Mousie. If one is in the mood for a longer ride, continue into Floyd County to German Bridge and spend the night at Jenny Wiley State Park.



Artisan Center in Hindman



Great food in Mousie



Scenic beauty at German Bridge



A few of the scenic and windy roads a motorcyclists will find along the route.

- There is also a route that starts at Hindman and travels on Hwy 3391 to Carr Creek Lake offering a number of campground facilities and a swimming area at the state park. The route then circles back to Hindman along curvy roads including Highways 1088 & 721.
- A third route creates a loop that includes Alice Lloyd College and the community of Pippa Passes, a great scenic overlook where one often sees elk, and one of the most curvy scenic roads in the entire county along Hwy 7.
- A fourth loop starts at Hindman and takes one past Yoder’s for some great homemade bread and cookies and along windy twisty roads through the community of Vest and the community of Fisty and Carrie and then back to Hindman.

All the recommended routes are featured on the map on the following page. Brochures and a website should now be developed encouraging people to get their training and ride their bikes through Knott County.

RECOMMENDATION #5 – Motorcycle Tour Routes

EXAMPLE TO FOLLOW:

Breathitt County has marketed their county for motorcyclists through the development of the “Venom Trails” which actually run through five counties. A map of their trails is featured on <http://trailsrus.com/breathittcounty/trails.html> and their website is <http://wickedtwistedroad.com/>

RECOMMENDATION: Knott County should become a motorcycle friendly community by adding special signage, providing detailed maps that include locations of gas stations, scenic views, and worthwhile stops and encouraging motorcycle clubs and groups to visit.

And do not limit the routes to just Knott County. Partner with other counties to develop multi-county and multi-state rides because motorcyclists love to ride. The consultant met two riders staying at Jenny Wiley State Park who had road their motorcycles all the way from Cincinnati following the back roads.

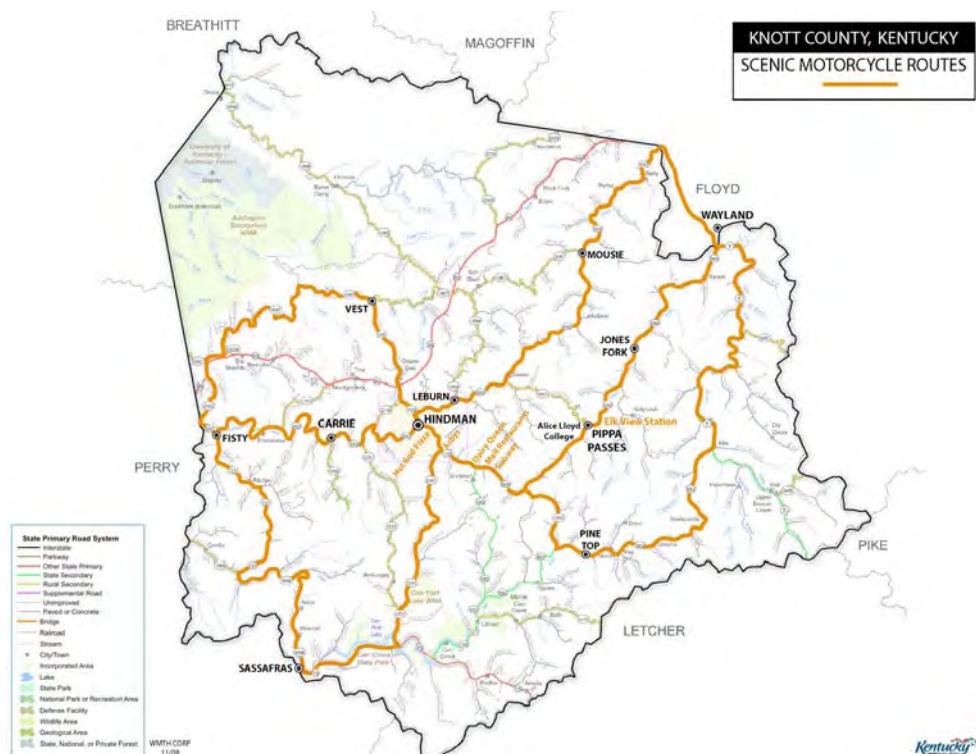


Two riders from Cincinnati rode their bikes down and planned to camp at Jenny Wiley State Park.



The next morning, they headed back home a different route than which they came.

PROPOSED MOTORCYCLE ROUTES THROUGH KNOTT COUNTY

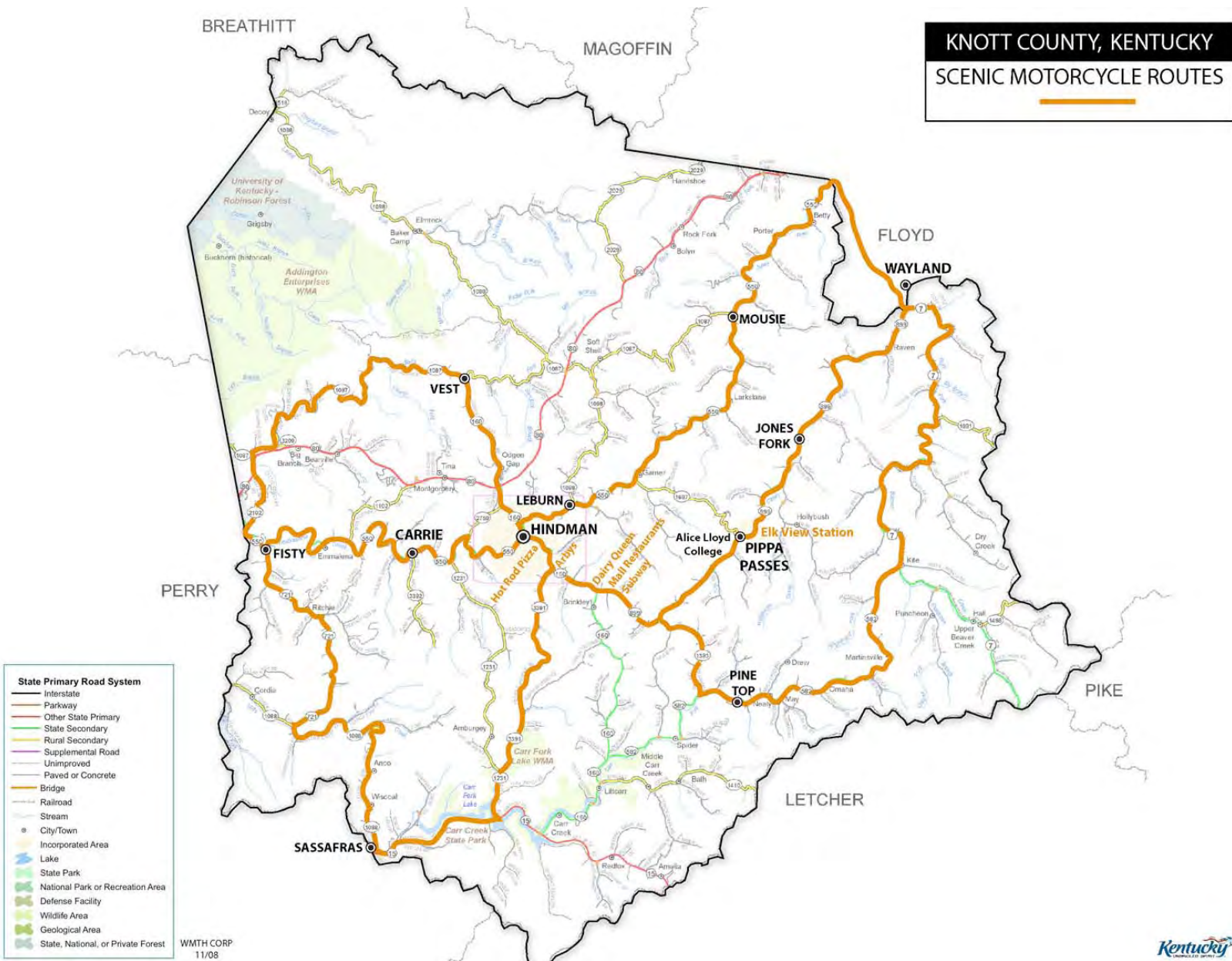


(Larger map on following page)

FOLLOW-UP NEEDED:

In one of the meetings, it was also noted that Combs Custom Cycles and Budweiser have a strong connection. It was also noted that Knott County has a connection with NASCAR and Petty racing. It is highly recommended that these connections be further researched.

RECOMMENDATION #5 – Motorcycle Tour Routes



APPENDICES

Included in the appendices is additional information on:

- **Campground Specifications**
- **Types of Stables**
- **Street Bike Safety Training Center**
- **ATV Trailhead and Facility**
- **Equestrian Trailhead and Trails**

APPENDIX I: Specifications for Campgrounds

It is recommended that campgrounds be developed throughout the county to address some of the lodging needs of those engaging in adventure tourism.

Below are specifications one might use as a guideline.

RV & PRIMITIVE CAMPING AREAS

- Suggested conceptual idea
 - 20 sites plus additional primitive sites
 - 10 units for 20 hook-ups with both 30 amp and 50 amp with 125 plug-in.
 - One dump station shared by all.
 - Water at every site.
 - Small picnic shelter with electricity, overhead fan and potable water spigot.
 - Potential to share shower house/restrooms, shelter pavilion and playground at the existing swimming pool/park area.
 - Dump station



Double pole units



30 amp, 50 amp, 125 plug-in



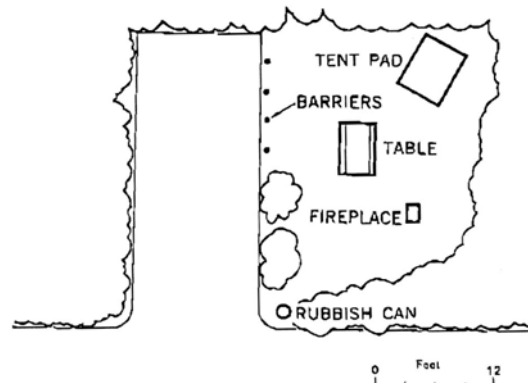
Electric and water concept



Water spigot concept



Double electric pole

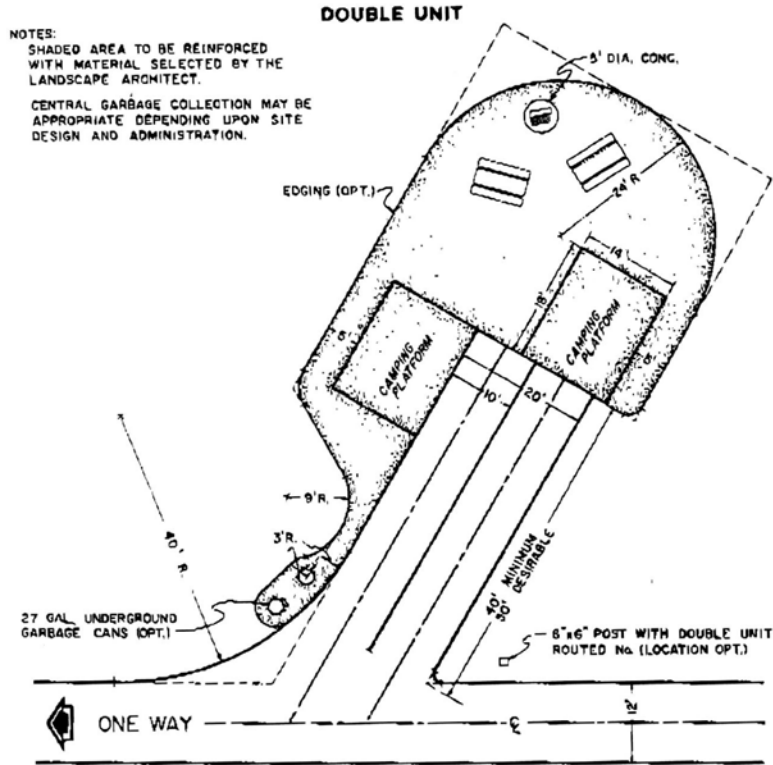


BASIC CONCEPT FOR TENT CAMPING – IDEALLY NEED A 30' X 36' SPACE

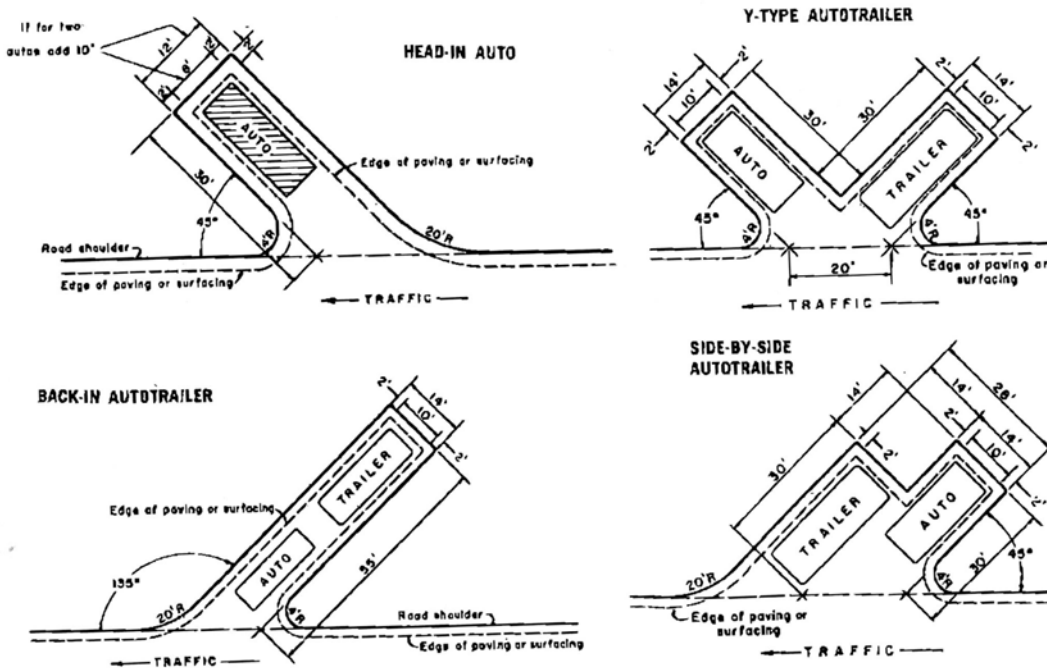
* Concept designs are from Douglass, R.W. (1993), *Forest Recreation*, 5th edition, Wardard Pres, Inc.

APPENDIX I – CAMPGROUND SPECIFICATIONS

CONCEPT PLAN AND RECOMMENDED DIMENSIONS FOR A DOUBLE CAMPSITE



CONCEPT IDEAS OF HOW TO PARK TRAILERS AND AUTOMOBILES AT SITE



APPENDIX I – CAMPGROUND SPECIFICATIONS

**Concept designs are from Douglass, R.W. (1993), Forest Recreation, 5th edition, Wardard Press, Inc.*

CONCEPT IDEAS FOR CAMPGROUNDS



Simple Concept – No concrete pads
Just hook-ups



Drive thru concept which is preferred



Varying depths to accommodate different rigs

Campgrounds that also serve as trailheads for either equestrian trails, ATV trails, or both should include pull-in areas with a minimum depth of 55 feet to accommodate both car and trailer.



APPENDIX II: Concept Ideas for Stables

Below are four concept ideas for stables.



The example to the left is a very simple, low maintenance and cost efficient design is recommended in areas where shade is available.

The proposed site at Knob Hollow has limited shade therefore this type of stable is not recommended. It would however work very well at both Pioneer Village and the proposed horse camp near Littcarr Recreational area.

The stable to the right is also very low maintenance but provides the necessary shade which would be needed at the proposed Knob Hollow RV Park near the Knott County ATV Training Center which has limited trees on site.



This facility is located at Rudy's near Cave Run. People are charged less rental fees if they muck out their own stalls after using.



This stable is fairly simple in design but would require some maintenance. It is constructed with four stalls in the front and four in the back.

This is a much more elaborate stable with over 40 stalls. This kind of stall would only be recommended if full time staff was available to oversee and maintain the facility.

Note: This design might be considered for Knob Bottom RV and Campground where full-time staff will be employed.



APPENDIX III: Street Bike Training Facility

Below is a proposal submitted in 2007 to the Kentucky Motorcycle Safety Commission requesting funding for the development of a street bike training facility in Knott County.

In the Fall of 2008, the Knott County Fiscal Court provided the funding and built the 200' x 300' asphalt safety course. The request is now for \$95,000 for classroom equipment and marketing.



New Street Bike Training Course

BACKGROUND

As part of a multi-phase project, Knott County is developing a county-wide recreational park system made up of a series of trails. One of the primary focuses of the trail initiative in Knott County is to help educate the user on proper use of equipment, safety training, environmental awareness while building an understanding and respect of other users.

Phase I included the development of the master plan which is attached as an addendum to this proposal. Phase II, partially funded by Recreational Trails funds, included the development of the OHV Training Facility featured below which also serves as a trailhead for both ATV/Dirt Bike trails and Equestrian trails. Sixteen miles of beginners, intermediate and expert designated trails specifically for motorized off road vehicle riders have now been GPS mapped and will become part of the overall trail system.

A local landowner gave the Knott County Fiscal Court 10 acres in which to build the OHV Training Center and trailhead. In the agreement, access to the training center was provided along with permission to develop a trail on a portion of their remaining property.



Front of Education and Training Center



Side view

The OHV Education Center and Training Facility in Knott County opened in Fall 2007. It is our hopes, through the assistance of the Kentucky Motorcycle Safety Education Advisory Commission, that we can expand the complex to include a training course for street bikes and use the facility for classrooms for both.

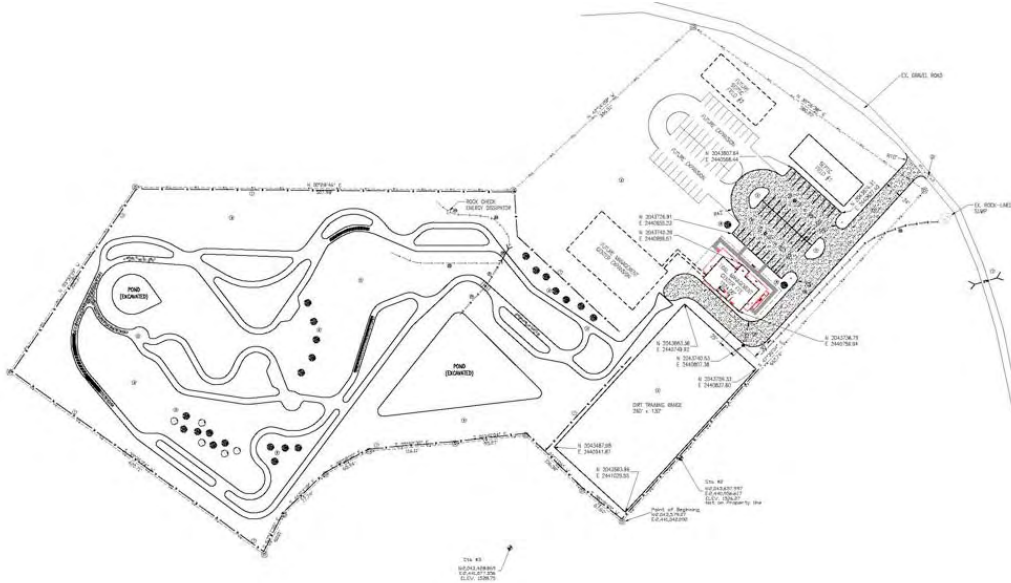
The facility includes a large classroom, caretakers unit and garage for storage and maintenance of ATV's, dirt bikes as well as street bikes if approved for funding. Parking, entrances, restroom facilities and showers are all handicapped accessible.

APPENDIX III – Street Bike Training Facility

REQUEST

The Knott County Fiscal Court, in partnership with those within the community and surrounding counties, wish to add a street bike training component at this location on a portion of the ten acres of the land donated for the OHV facility.

OHV TRAINING CENTER



The indoor classroom facilities at the Education Center on site could be utilized for both street bike and OHV classes. The Education Center could also provide storage space and maintenance area for the motorcycles and equipment.



EDUCATION CENTER ON SITE
AT THE OHV TRAINING FACILITY

A 200 x 300 area within the 10 acre area has been set aside to serve as a training area specifically for street bikes. If built, it would be available for use by certified street bike trainers 24/7. A parking lot has already been developed for the OHV Center and could be jointly shared by street bike participants. Additional parking is available within close proximity to the site.

APPENDIX III – Street Bike Training Facility

SAFETY WILL BE PRIMARY FOCUS

A portion of the funds will be used to:

- Properly mark roads and create a greater awareness of other traveling motorists that the roads are being used by motorcycles and other street bikes,
- Develop specific “trail maps” that designate which roads are best for motorcyclists and street bikes in general,
- Provide an overview of safety precautions a motorist can take to ensure safe travel.

The Safety Institute, Honda Training Program, and Motorcycle Rider Program will provide brochures, posters, training manuals, etc. The local newspaper and radio station have agreed to provide free public service announcements as well as donating copy space and time on the air to create a greater awareness of all motorists encouraging safe travel to ones destination and to be extra cautious due of the street bikes which are not always easily visible.

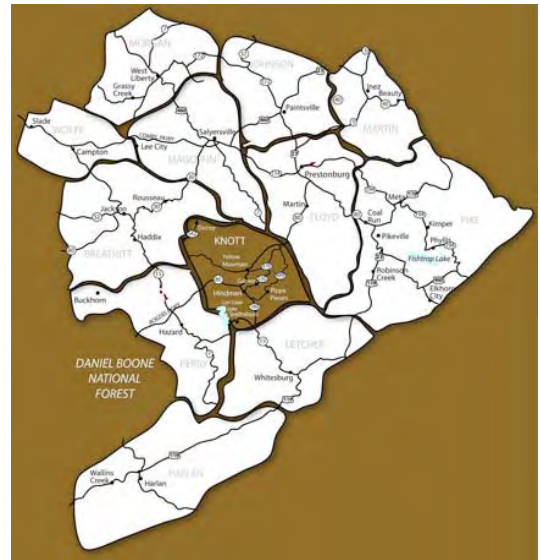
Once the trails have been established, maps and brochures will be designed that include both environmental and safety information for both motorists and nonmotorists.

STRATEGIC LOCATION

Knott County is centrally located in Eastern Kentucky within easy driving time of 14 other counties. The County Seat, Hindman, is roughly a two hour drive from Lexington KY, three to four hour drive from Cincinnati, Ohio; Charleston, West Virginia; or Knoxville, Tennessee.

The county is easily accessed via KY 80, which connects to the Hal Rogers Parkway at Hazard and US 23 near Prestonsburg. There is very little commercial development within the county, most of which is centralized within a few miles of the county seat.

The Education Center is located just 2 miles off Highway 80. The entire county is extremely rural with breathtaking views with limited traffic on many of its mountain roads.



ESTIMATED COST

It has been determined it will cost approximately \$175,000 to asphalt the area to a 6-3-1 template. Classroom equipment, furniture etc. as well as signage and marketing totals an additional \$95,000.

EXPERTISE

Overseeing this initiative is County Judge Executive Randy Thompson. Assistance and advice has been provided by Chris Cox (Honda Rider Education and Environmental Coordinator – Troy Ohio), Wayne Steele (Executive Director for State Motorcycle Program), Bruce Kelly (Kentucky State Police) and Tim Cody (a state certified instructor in both ATV and street bike training).

APPENDIX III – Street Bike Training Facility

PROPOSED BUDGET

As noted, Knott County Fiscal Court has built the 200' x 300' asphalt training course. They are now requesting on the funds for classroom equipment, furniture and marketing.

Street Bike Training Facility \$174,842.00 Paid for by Knott Co.
200 x 300 Asphalt Pad using a 6-3-1 template Fiscal Court

Asphalt Surface:

6,667 sq yds x 1" x 0.055 ton/sq in x \$80.00 ton = \$28,335.00

Asphalt Base:

6,667 sq yds x 3" x 0.055 ton/sq in x \$80.00 ton = \$88,004.00

Crushed Stone Base

6,667 sq yds x 6" x .00575 ton/sq l x \$25.00 ton = \$57,503.00

Office/Classroom Equip. & Furniture \$45,000.00

Seating for a class of 24 students (6 tables).

- 6 Round tables
- 24 chairs
- 2 desks

Bookcases/display units

DVD unit

Computer

Copy machine/fax machine

One long table for displays/board meetings

40 fold up chairs

Signage and Marketing \$50,000.00

- Working with the KY Department of Transportation and following MUTCD Guidelines, add signage along streets and highway that promote safe travel for both those riding motorcycles as well as other motorists on the road. *Please note: A proposal has been submitted to the Kentucky Recreational Trails Program to also assist in this endeavor.*
- Establish designated street bike routes and develop a marketing plan to promote their use as has been done in Tennessee (*see attached article*).
- Develop a website promoting the street bike training course and street bike routes throughout Knott County.
 - Includes web hosting and maintaining the website for three years.
 - Submit the website to search engines and establish meta-tags and key words.
- Develop a brochure and other marketing tools to promote both the street bike training course, safe practices and the street bike routes.
- Work with surrounding county leadership to expand both the street bike routes and safety signage into multiple counties.

APPENDIX IV: Trailhead for ATV Fire Trail #2

It is recommended that a trailhead be created on donated property in the eastern portion of the county on Piney Spur. Below are specifications one might use as a guideline and justification.

As part of the countywide Adventure Tourism Trail System initiative underway in Knott County, 45 miles of trails have been GPS mapped on the south side of 582 in the eastern quadrant of the county connecting with trails in Letcher County with the potential of an additional 90 miles or more of trails on the north side of 582 leading into Floyd County. The trails in this area are primarily located on existing old coal and timber roads, many of which are now used as gas roads.

This particular trail system, to be known as ATV Fire Trail #2, can be accessed from Hwy 582 between the community of Pinetop and the intersection of Hwy 7. Rudolph Honeycutt owns the property immediately adjacent to Hwy 582 and has agreed to allow an ATV trailhead to be developed at this location where those wanting to access the trails may park and ride. He has also provided permission for a publicly accessible trail to be developed following the existing road system commonly referred to as the Fire Trail since 1964.

A second trailhead, primarily accessible by ATVs, horseback or by hiking into the area will be developed at Piney Spur, a strategic location very close to the Letcher County line and just a few miles from the Floyd County line. A trailhead at this location could serve all three counties and help to increase the ATV trail use in a portion of the county which has an interest in expanding their trails for greater public use. To this end, the family of Dennis Mullins has deeded to the Knott County Fiscal Court approximately ½ acre to serve as a base camp and meeting area for those using the Fire Trail and other trails as they are developed.

Recommendation: Establish both a trailhead and base camp along the Fire Trail #2.

Initially the Fire Trail #2 Trailhead off Hwy 582 will provide access to over 100 miles of ATV and dirt bike trails through the counties of Knott, Floyd and Letcher. The Piney Spur site will serve as a campground for these off-road motorized vehicle users as well as for horseback riders, backpackers, hikers, and mountain bikers as these trails are created over the next few years. There is also room for more than 500 primitive campsites for large organized trail rides.

On this site, it is also recommended that a building be constructed primarily of concrete or concrete block with a metal roof and concrete foundation for ease in care and maintenance. The Trailhead facility will include a shower house and restroom facility with concrete floor, septic system, potable water and electricity.

The cost of the Trailhead Facility for Fire Trail #2 which includes site preparation, construction of a shower house and restroom facility with covered shelter, water, electricity and septic tank is estimated at \$120,000. An additional \$40,000 will be used site preparation for trail development of 60 miles of trails, mapping and trail signage which will include designated parking and camping area plus \$20,000 for liability insurance for both trails and trailhead.

APPENDIX IV: Trailhead connecting trails in three counties

BUDGET BREAKDOWN

Fire Trail #2 – Trail Development/ Maintenance and Trailhead

20' x 30' structure with metal roof and concrete foundation <i>(Two toilets, two showers and a covered shelter)</i>	\$45,000
Electricity which includes safety lighting in camping area	\$15,000
Water to site which includes outside spigot for camper use	\$20,000
Septic System	\$20,000
<u>Site preparation <i>(includes grass parking area and primitive camping)</i></u>	<u>\$20,000</u>
	\$120,000

A FEW PHOTOS OF TRAIL AND PROPOSED SITE LOCATION



Trailhead location with road to right leading up to it.



On top of a reclaimed coal site on Fire Trail #2



Two of the old coal roads being turned into trails for ATV's and dirt bikes at Fire Trail #2

APPENDIX IV: Trailhead connecting trails in three counties



One of the old coal roads being incorporated into the ATV/dirt bike trail system on the Fire Trail #2



A view along Fire Trail #2

APPENDIX IV: Trailhead connecting trails in three counties

CONCEPT IDEA FOR COVERED SHELTER/SHOWER HOUSE COMBINATION



Overhead fans and lighting both inside and outside could be partially operated by solar power. The back portion would be extended to include both a shower house and restroom facility. (See concept idea for floorplan below)

