

SPORTSPLEX MAGAZINE

FIRST EDITION



**GRAND OPENING!**  
**October 12, 2007**

[www.knottcountysportsplex.com](http://www.knottcountysportsplex.com)



BASEBALL



SOCCER



BOWLING



CHEER ZONE

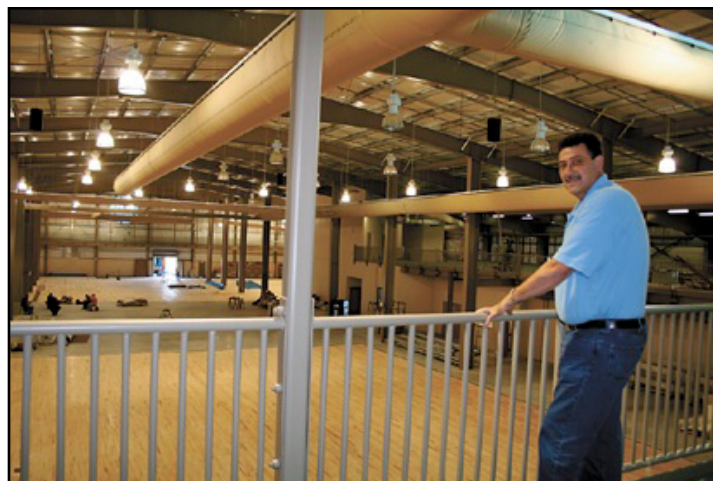
In 2004, the Knott County Fiscal Court partnered with the Knott County Youth Foundation to begin developing plans and finding funding to develop this 66,000 sq. ft. indoor facility that also includes three baseball fields and two soccer fields outdoors. Under the leadership of Judge Executive Randy Thompson, the dream of having a state-of-the-art sports complex in eastern Kentucky has become a reality!

In the summer of 2007, Rhett Gibson, retired teacher and coach, was hired as the facility's director. Gibson hit the ground running in preparation for the opening and daily operations of the facility. In addition to attracting AAU, BCI and other youth sporting events, his plans include offering several different basketball, baseball and bowling leagues. He also hopes to return men and women's softball leagues to Knott County.

The mission is to provide a fun and nurturing environment to promote character and sportsmanship through physical fitness and competition for the youth and their families of the area.

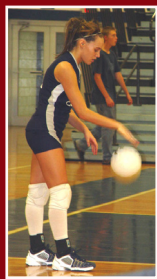
### **JOBS! JOBS! JOBS!**

The facility is also bringing jobs to the county. It is anticipated the facility will eventually employ five to six full-time employees, offer numerous part-time jobs in the concessions, bowling alley, field maintenance, janitorial services as well as a great need for referees and umpires.

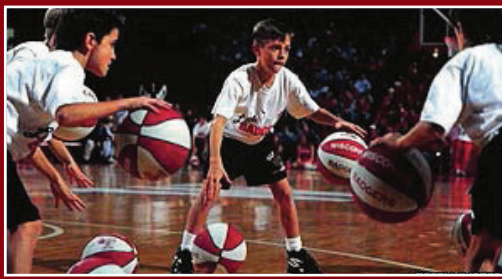


**Knott County Sportsplex**  
Mailing Address: P.O. Box 1347, Hindman, KY 41822  
Street Address: 450 Kenny Champion Loop  
Soft Shell, KY 41831  
(606) 785-5932





VOLLEYBALL



BASKETBALL



ARCADE



FITNESS CENTER

## WELCOME TO THE KNOTT COUNTY SPORTSPLEX

Knott County Sportsplex is the most modern, state-of-the-art multi-sports complex facility in the state of Kentucky.

Located six miles east of Hindman, take Hwy 80 past mile marker 13 and turn onto Chestnut Ridge Road, follow to Kenny Champion Loop. The Sportsplex is right in the heart of elk country and offers:

- 3 baseball fields with lights for nighttime play
- 2 soccer fields
- 66,000 sq. ft. of indoor fun
- 5 full-sized hardwood maple basketball courts
- 5 volleyball courts
- Arcade
- 8 lane bowling alley
- Fitness center
- Baseball batting cages
- Cheer center
- Conference room
- Sports museum
- Indoor walking track
- Concessions (indoor and outdoor)
- Eating and viewing area
- Sports shop



20 minutes east of Prestonsburg and 30 minutes west of Hazard on Hwy 80.

In addition to being the home of the Mountain Legends' Hall of Fame, Knott County Little League and BCI basketball, we look forward to hosting regional and statewide sporting events.



*Knott County wants to recognize Kenar Architectural Firm for their work on the Sportsplex.*

*And our thanks to Codell Construction who served as the construction manager and completed the job two months ahead of schedule.*



# FEATURES



## BASEBALL FIELDS

There are two Little League fields and one high school baseball field all with lights for night games.



## SOCCER FIELDS

Both fields are regulation size with lighted fields.



## BASKETBALL AND VOLLEYBALL COURTS

There will be five full-size combination basketball/volleyball courts with hardwood maple floors and electronic scoreboards.



## CONFERENCE ROOM

A large conference room upstairs will also serve as a museum of sports memorabilia including information on the strong basketball tradition in the mountains of eastern Kentucky.



## INDOOR WALKING TRACK

A walking track overlooks the basketball/volleyball courts.



## INDOOR AND OUTDOOR CONCESSIONS

There are both indoor and outdoor concession areas at the Sportsplex. The indoor concessions includes an area for birthday parties and special groups.

# FEATURES



## ARCADE CENTER

A special room in the center of the complex contains the “newest and best” in video and arcade games along with a few long time favorites.



## BOWLING ALLEY

Featuring 8 lanes with electronic scoring. There will be “cosmic” bowling with black lights for teens on Friday and Saturday nights and senior citizen leagues during the week.



## FITNESS CENTER

The fitness center features nautilus including free weights, circuit training, steppers, elliptical as well as four stationary bikes and three tread mills that allow one to watch TV with headphones while they work out.



## CHEER ZONE

A special area has been designated for both tumbling and cheerleading with a special spring flooring for added height on jumps.

## GREAT NEWS!

Henry Young will be the director of the tumbling and cheerleading program at the facility. He was previously the director for the Kentucky Bluegrass Games in tumbling and the sports chair for KAAU/T&T and has had two world tumbling champions from Kentucky winning silver medals for the USA in Portugal and Australia at the World's Age Group Champions with over 25 national champions in both tumbling and trampoline and over 75 state champions\*.

*\* Information provided by Troublesome Creek Times*



## MOUNTAIN YOUTH BASKETBALL LEAGUES

The Knott County Youth Foundation will be holding its first youth basketball leagues this fall in the new Knott County Sportsplex. There will be six divisions:

- Mini All Stars (boys and girls ages 4-6)
- Little Champions (boys and girls 7-8)
- Girls Semi-Pro League (ages 9-10)
- Boys Semi-Pro League (ages 9-10)
- Girls Pro Division (ages 11-12)
- Boys Pro Division (ages 11-12)

The Pro and Semi-Pro Leagues will play boys and girls separately, while the Mini All-Stars and the Little Champs League will be co-ed. Coaches are encouraged to get their teams together now. Rosters are to range from 10-15 players. Games are set to begin on October 15, 2007 with over 70 teams planning to participate.

## TOURNAMENTS

Kentucky BCI Girls Middle School Classic  
 October 12-14, 2007  
 7th & 8th Grade Teams  
 Entry Fee: \$150    Entry Deadline: Oct. 5

Kentucky BCI Boys/Girls Veteran's Memorial  
 November 9-11, 2007  
 7th & 8th Grade Teams  
 Entry Fee: \$150    Entry Deadline: Nov. 2

TVS Cable/Kentucky BCI Boys/Girls Thanksgiving Invitational  
 November 23-25, 2007  
 7th & 8th Grade Teams  
 Entry Fee: \$150    Entry Deadline: Nov. 16





BATTING CAGES



MEETING ROOMS



CONCESSIONS



INDOOR TRACK

## TOURNAMENTS (CONTINUED)

Hampton Inn/Kentucky BCI Boys/Girls Middle School Tip-Off Classic  
 November 30-December 2, 2007  
 7th & 8th Grade Teams  
 Entry Fee: \$150 Entry Deadline: Nov. 23

Kentucky BCI Boys/Girls Winter Shootout  
 January 4-6, 2008  
 7th & 8th Grade Teams  
 Entry Fee: \$150 Entry Deadline: Dec. 28

Kentucky BCI Boys/Girls Grade School State Qualifier  
 February 1-3, 2008  
 2nd-6th Grade  
 Entry Fee: \$150 Entry Deadline: Jan. 24

Kentucky BCI Boys/Girls Mountain Preview  
 March 21-23, 2008  
 Entry Fee: \$200 Entry Deadline: Mar. 14

Kentucky BCI Boys/Girls Super Showcase  
 April 18-20, 2008  
 Registration: Print  
 Entry Fee: \$200 Entry Deadline: Apr. 11

Appalachian Mountain Challenge  
 May 2-4, 2008  
 Entry Fee: \$200 Entry Deadline: Apr. 25

Parker Professional Pharmacy/Kentucky BCI Boys/Girls  
 JV & Varsity Summer Showdown  
 June 20-22, 2008  
 Entry Fee: \$350 Entry Deadline: Jun. 13

### MOUNTAIN LEAGUE BASKETBALL LEAGUE RULES

Games will consist of 4 six minute quarters  
 Mercy rule will go into effect after a 20 pt. lead  
 Teams must have a min. of 8 players  
 Players can not be added to a team's roster  
 beyond the second game.  
 Players must have insurance  
 Teams should have legal uniforms  
 Basketballs will be supplied by Sportsplex  
 Players are to carry playing shoes into the facility  
 Home team will provide official scorer and timer  
 Players can play up a level but not down  
 All players on the roster must play one quarter

### MINI ALL STARS

Wrist band rule  
 Coach has discretion to shoot freethrows/  
 inbound ball  
 No backcourt defense  
 Eight foot goal  
 27.5 inch ball

### LITTLE CHAMPIONS

Eight foot goals  
 28.5 inch ball  
 Back court defense allowed by trailing team only  
 in the 4th quarter

# Become a Member Today!

## SPORTS MEMBERSHIPS

Membership to the Sportsplex is an all inclusive membership. There are no initiation fees or extra user fees.

### All members have access to the following:

- Fitness Center
- Locker rooms (private individual lockers & showers)
- Walking track
- Basketball courts (based on availability)

Membership does **NOT** include admission to special events, such as BCI and AAU Tournaments.

### Membership Rates:

Daily Individual: \$5	Daily Family: \$15
Monthly Individual: \$30	Monthly Family: \$75
Annual Individual: \$300	Annual Family: \$750

### Walking Track Only Passes:

Daily: \$1	Monthly: \$15	Annually: \$150
------------	---------------	-----------------

*\*A 10% discount will given to students and senior citizens (62 +)*

### General Policies:

Knott County Sportsplex strives to offer a wholesome environment for our fans as well as participants. Any activities that detract from our image, as a safe and healthy environment, will be dealt with quickly and strongly leading to expulsion and possible persecution. Help us maintain our wholesome image by observing the following rules:

- Absolutely no alcoholic beverages permitted.
- Exhibit good sportsmanship - no profanity or obscene gestures.
- No tobacco products allowed.
- All participants shall play at their own risk.
- No outside food or beverages (including coolers) permitted.
- Playing shoes must be carried into the facility.
- No running on the walking track.
- Parents must monitor their children especially when occupying the mezzanine level.

